


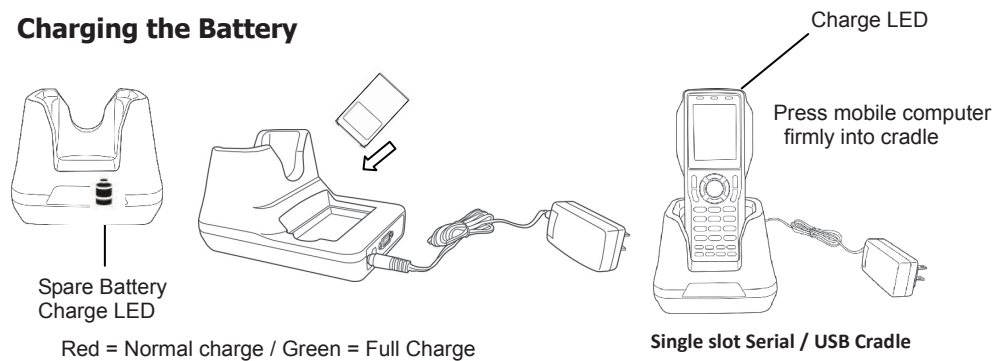


⚠ First time initiation of the product, please:

1. Fully charge the main battery for at least 16 hours;
2. Before inserting the main battery ,please verify the insertion direction and battery contact are properly aligned;
3. For hand-grip model, ensure battery compartment lock is in **“LOCK”** position;
4. For pistol-grip model , ensure battery compartment lock is in **“Free”** position before assembling; locking screw is fully engaged;
5. Press the  reset and  power button simultaneously to clean up the system. (If Application has been preloaded, please press the  power button only.

⚠ To avoid data loss, Please **DO NOT** remove the main battery from the product for over **15** minutes.

Charging the Battery



Install ActiveSync

Download ActiveSync ® 4.5 or higher from <http://www.microsoft.com> and follow the instructions to install ActiveSync onto the host computer.

Follow the on screen ActiveSync instructions to establish a connection between the PA-60 and the host computer.



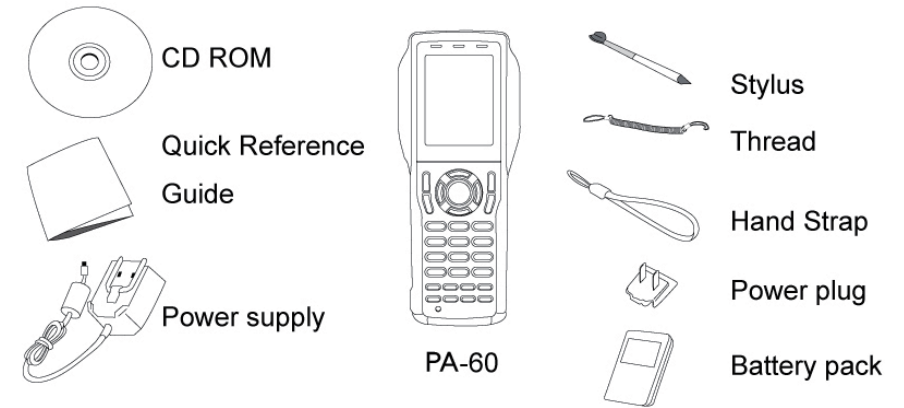
49-PA601-001 Rev. A – Feb.2013

PA-60 Mobile Computer

Quick Start Guide

<http://www.argox.com> See User Manual for more information

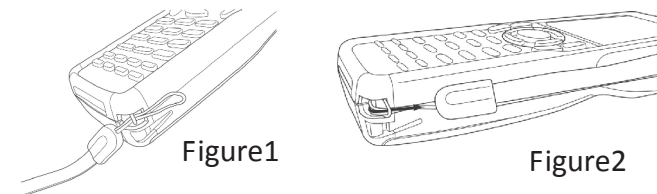
Depending on the configuration ordered, the PA-60 shipping container may include:



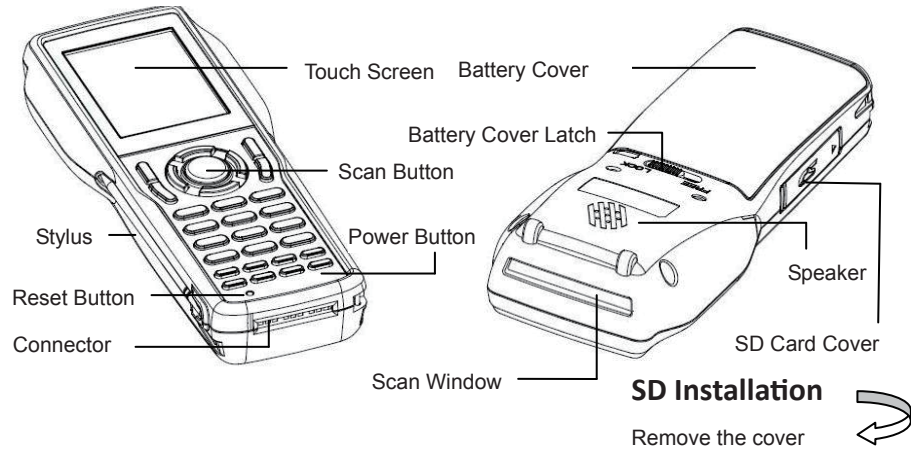
To attach the hand strap

1. Fix the small cord of the strap around the pillar of the terminal. (Figure 1)
2. Insert the handle of the strap in the thin loop. (Figure 2)
3. The strap is fixed to the terminal.

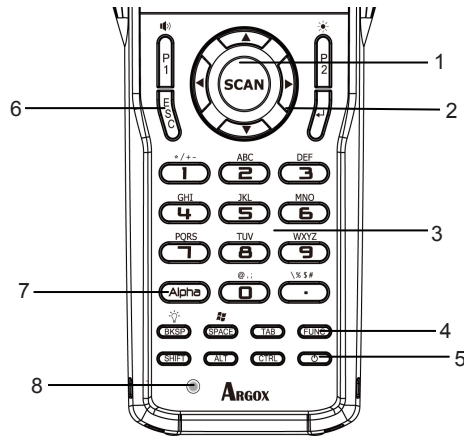
Hold the hand strap around the wrist when carrying the terminal



Feature



Keypad and function button



When the Function button is pressed, an icon appears in the operation system

Function activated icon



- | | |
|-------------------|-----------------|
| 1. Scan key | 5. Power key |
| 2. Navigation key | 6. Function Key |
| 3. 10-key pad | 7. Alpha Key |
| 4. Enter key | 8. Reset Key |

Function key

Use this key to launch applications and select items (show on the keypad in yellow.)

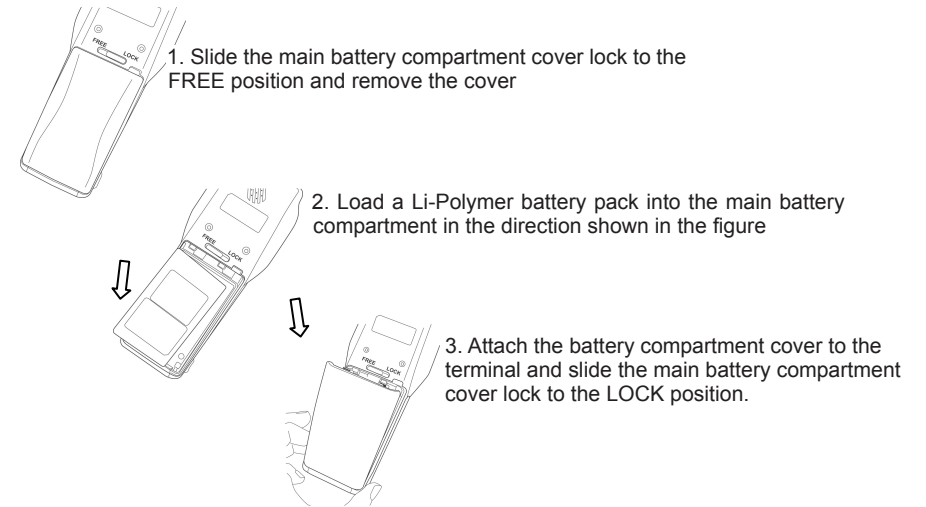
- Press the "FUNC" key once to activate this mode followed by another key

Alpha key

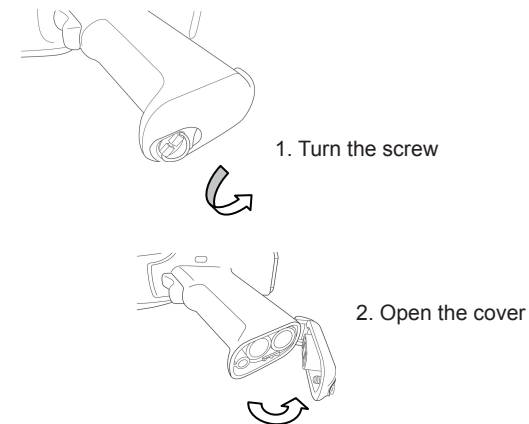
Use this key to access the secondary layer of characters and actions.

- Press the "Alpha" key once to lock the keypad in the Alpha state
- Press the "Alpha" key second time to return to the normal state

Install or replace the main battery in the terminal



Install or replace the main battery in the gun grip



⚠ Be sure to turn the terminal off before you doing this.