

Patrol Manager III User Manual

Revisions

Date	Version	Writer	Note
2009/11/13	V1.0.0	Chris	Original Release

Content

Introduction	5
Installation	5
Platforms Supported	5
Database	5
.Net Framework 2.0	5
Windows Installer 3.1	6
Report Component	6
Hardware Requirement.....	6
Patrol Terminals Supported.....	6
Installing Microsoft SQL Server 2005 SP3 Express Edition.....	6
Installing Microsoft SQL 2005 Manager SP3	14
Adding ASP.NET User Account into SQL Server	錯誤! 尚未定義書籤。
Initializing the Database.....	17
Running Patrol Manager III	19
Product Registration	19
Login.....	19
Toolbar	19
Status bar	20
Patrol Tour Terminal- GuardScan Series.....	20
Communication Port.....	20
Setting ID.....	21
Setting Date and Time	21
Getting Date and Time.....	21
Clearing Patrol Data	21
Downloading Patrol Data	22
Getting Firmware Version Information	22
Recovering Patrol Data.....	22
Patrol Tour Terminal - Watchman Series.....	23
Communication Port.....	23
Setting ID.....	23
Setting Date and Time	24
Clearing Patrol Data	24
Downloading Patrol Data	24
Changing Password	25
Setting Password.....	25
Card Definition	26

Defining Patrolman	26
Adding Patrolman	26
Modifying Patrolman	27
Delete Patrolman	27
Defining Checkpoint.....	27
Adding Checkpoint	27
Modifying Checkpoint.....	28
Deleting Checkpoint.....	28
Defining Event	28
Adding Event	29
Modifying Event	29
Deleting Event	29
Defining Route	29
Adding Route.....	30
Modifying Route.....	31
Deleting Route	31
Defining Patrol Tour Terminal	31
Customer Data	32
Adding Customer.....	32
Modifying Customer	33
Deleting Customer	33
Tools	33
Database Tools	33
Database Status.....	33
Clearing Patrol Data	34
Connection String.....	34
Backing up Database.....	35
Restoring Database	35
Compacting Database	35
Repairing Database	36
Language Editor	36
Security	37
Setting Password.....	37
Setting the Account and Permission	37
Options.....	38
Raw Data	38
Defining Unknown Card	39
Saving Raw Data to Text File	39

Opening Raw Data File	39
Saving Raw Data to Database.....	39
Reports	39
Patrol Data Report.....	40
Raw Data Report	40
Exception in Raw Data	40
The Rule of Analyzing Raw Data	40
Patrol Data.....	41
Viewing the Patrol Data	41
Reports	42
System Reports	42
Patrol Data Reports	42
User Information	43
Logout	43
Patrol Manager III Web Version	44
Appendix I – Question & Answer	44
Appendix II-Each system’s IIS setup and configuration.....	45
Windows 2003	45
Windows XP	48
Windows Vista	49
Windows 7	49
Appendix III- SQL Server allow remote connections	49

Introduction

Patrol Manager III is whole new design software. Comparing to the old used 10 years version I & II, the version III is more efficiently and friendly uses. It supports two kinds of MS Access and MS SQL database which allows you to select to meet the needs. The platform it supports is Windows XP or later versions. Old good features still included in this version, multi-language interface, multi-users access ... etc. Now, the version III is able to download any kind of GIGA-TNS's patrol terminals without manually select the model. The added new function, WEB BASE program, allows the client easily viewing, searching, and printing out the patrol data just by using the browser (IE or Firefox).

Installation

This topic details the required components and supported platforms for Patrol Manager III ◦

Platforms Supported

Below is the list that supported platforms:

- Windows XP
- Windows Vista
- Windows 7

Not support 64Bit System

Database

Below is the list that supported databases:

- MS Access
- MS SQL 2005 or later version. The pre-built of Patrol Manager III is Express version which is limited to use the capacity of database up to 4 G.

.Net Framework 2.0

The installed Windows must pre-install the Microsoft .Net Framework 2.0 or later

version ◦

If your Windows .Net Framework version is early than version 2, then you can find the version 3 setup file in the CD.

Windows Installer 3.1

The installed Windows must pre-install the Windows Installer 3.1 or later version ◦
If your Windows Installer version is early than version 3.1, then you can find the Windows Installer 3.1 setup file in the CD.

Report Component

The report component needs to be installed before installing *Patrol Manager III*. It provides the printing out report function.

The report component setup file is located in the setup CD.

Hardware Requirement

CPU : Core Due 2.0G Hz or above

HD Free Space : 1G or above

RAM : 512MBor above

Patrol Terminals Supported

Guard Scan series : GS1000 、GS1100

Watch Man series : WM-3000 、GP120

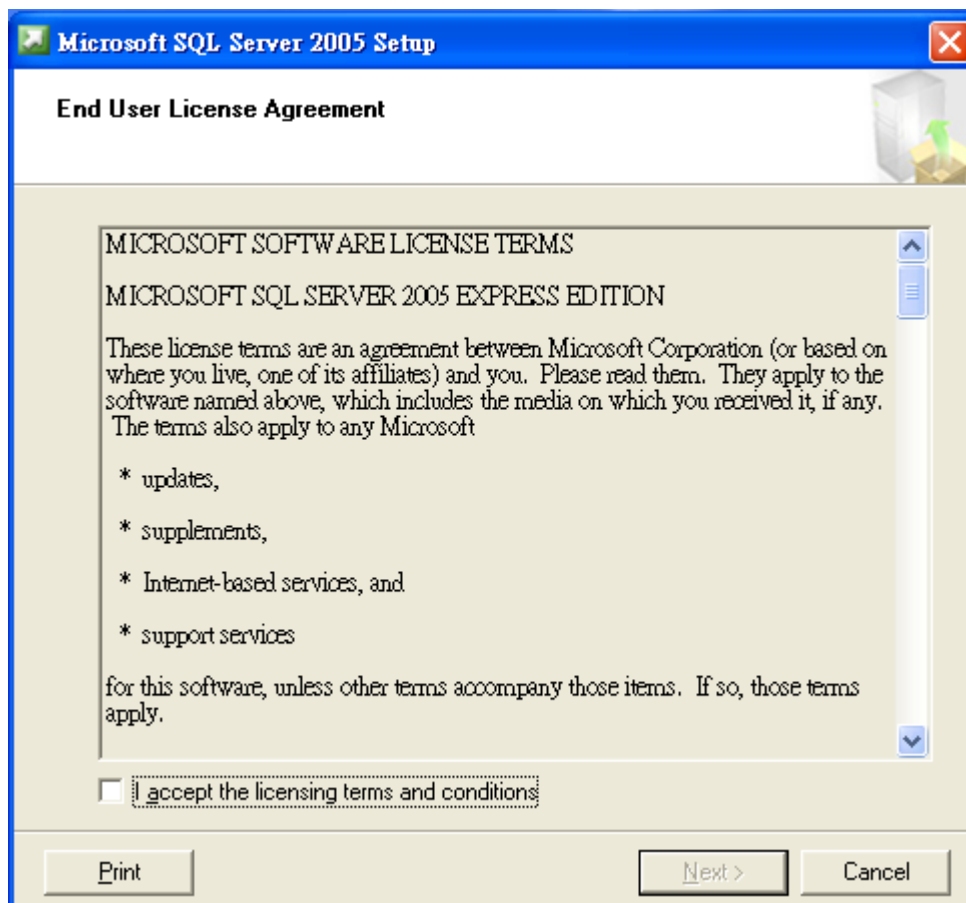
Installing Microsoft SQL Server 2005 SP3 Express

Edition

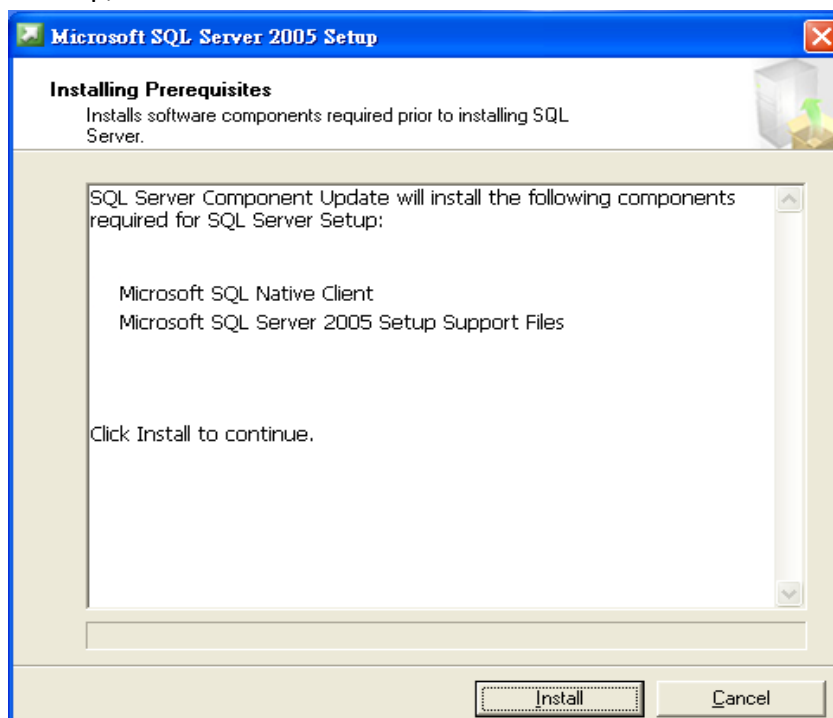
Before installing, please make sure the .Net Framework 2.0 and Windows Installer 3.1 is installed in the Windows, otherwise can go further.

In the Installation Window, execute *Microsoft SQL 2005 Express Edition SP3* to start installing.

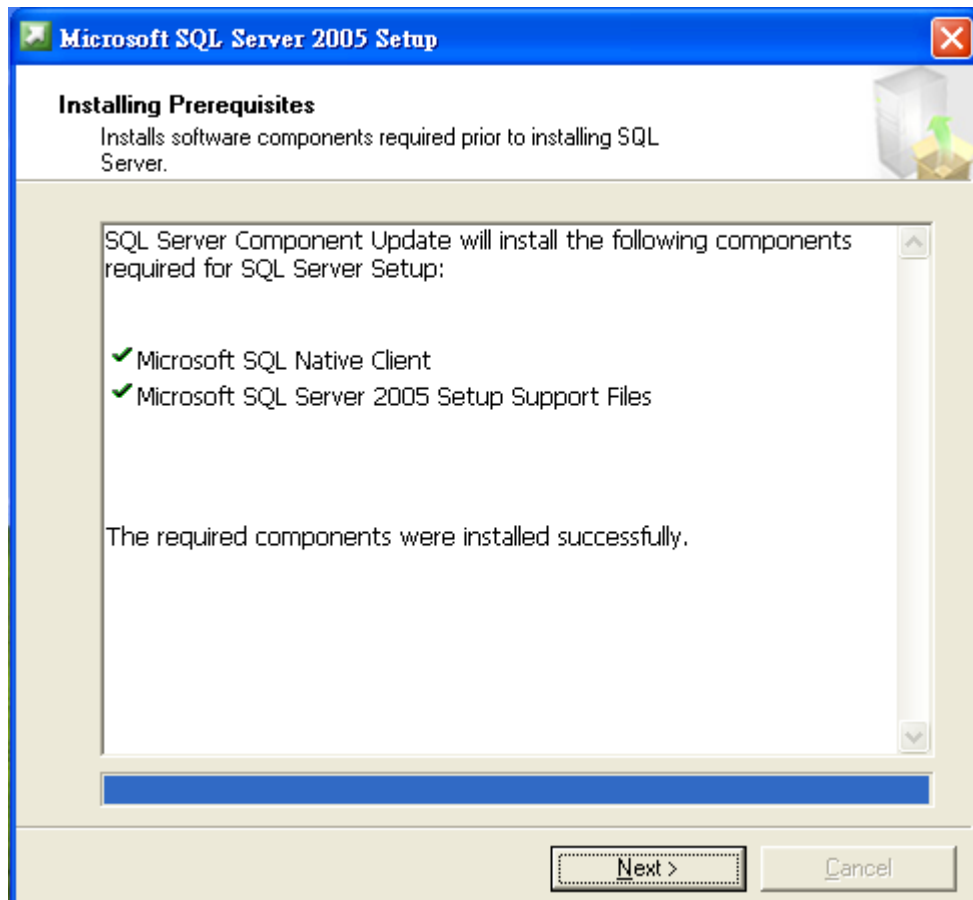
If the suggestion the system is Windows XP SP3 installment SQL the Server language family must be the same with the work system
1st step, select *I accept the licensing term and condition*, then click *Next*.



2nd step, click *Install*.



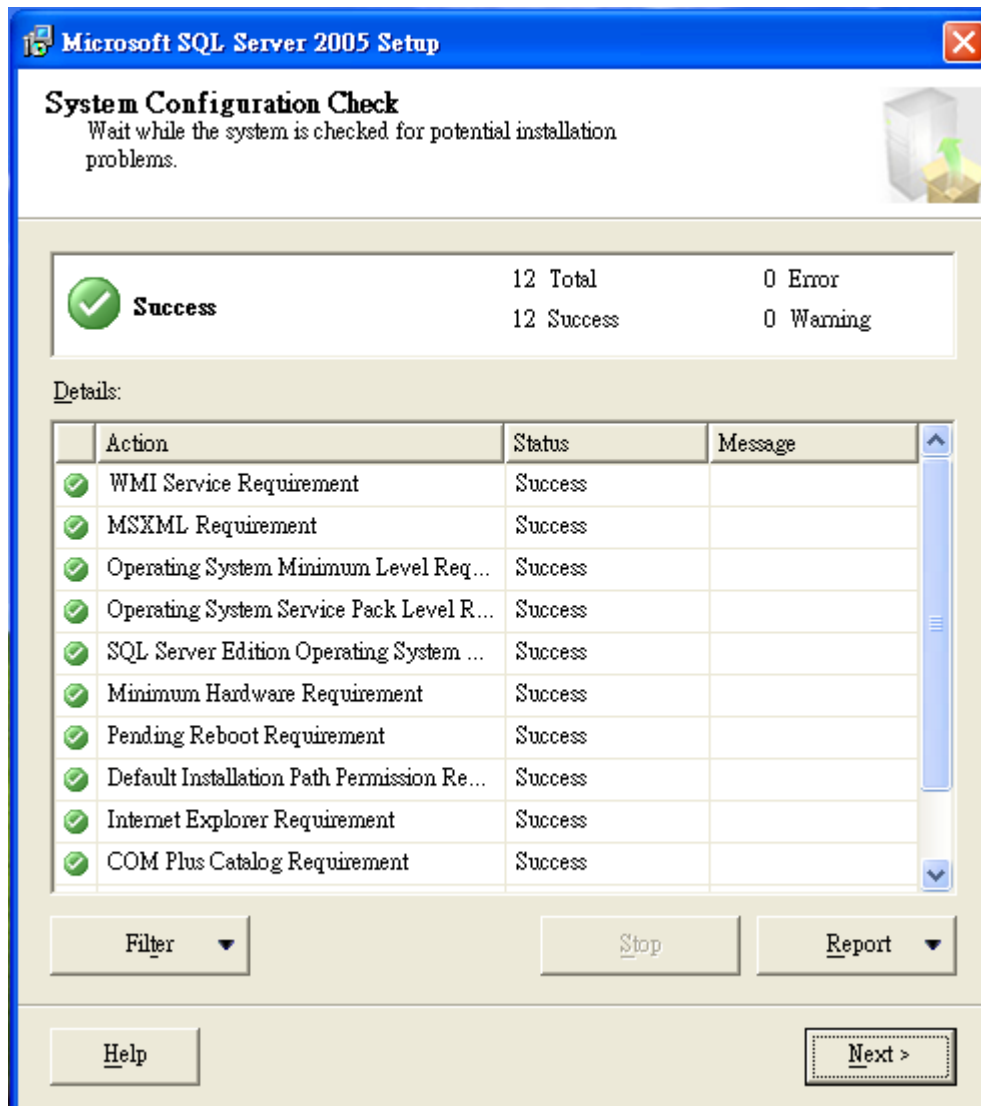
3rd step, click *Next*.



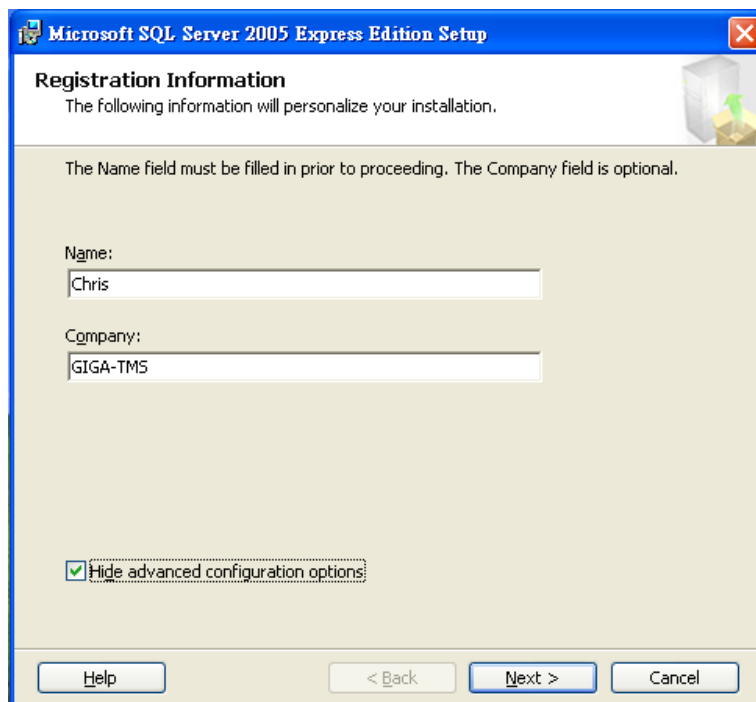
4th step, click *Next*.



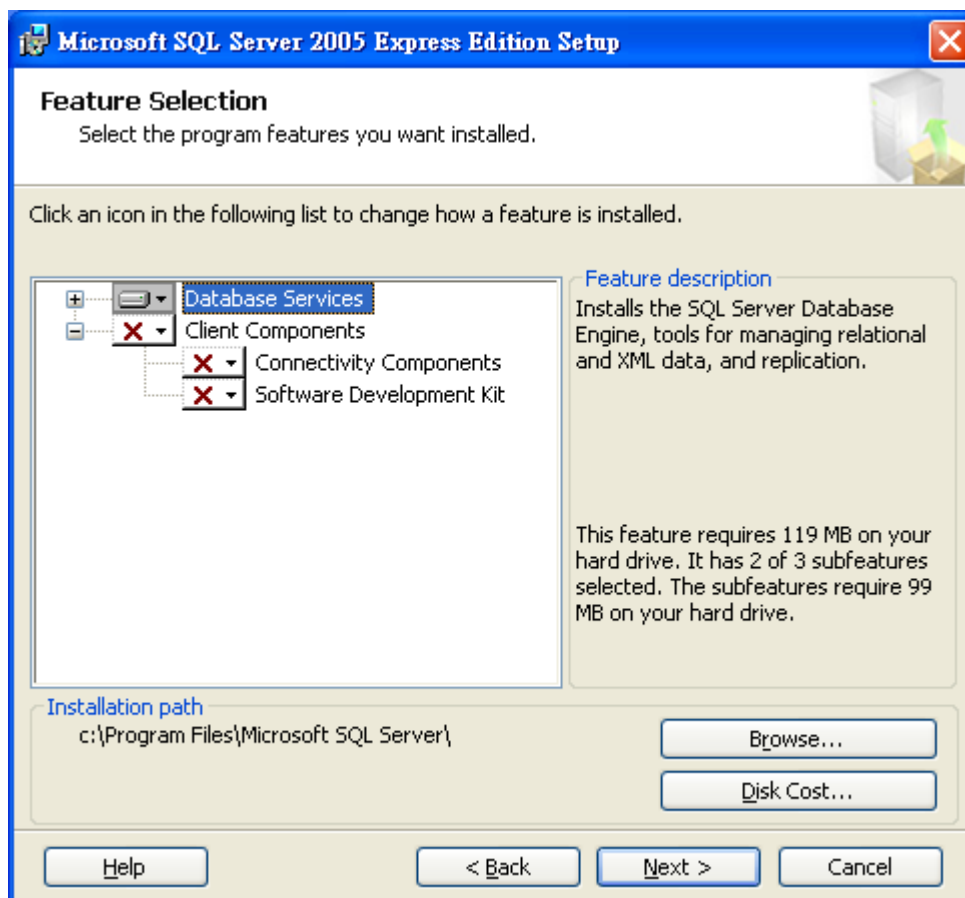
5th step, this window shows the checking process, when done, click *Next* for next process.



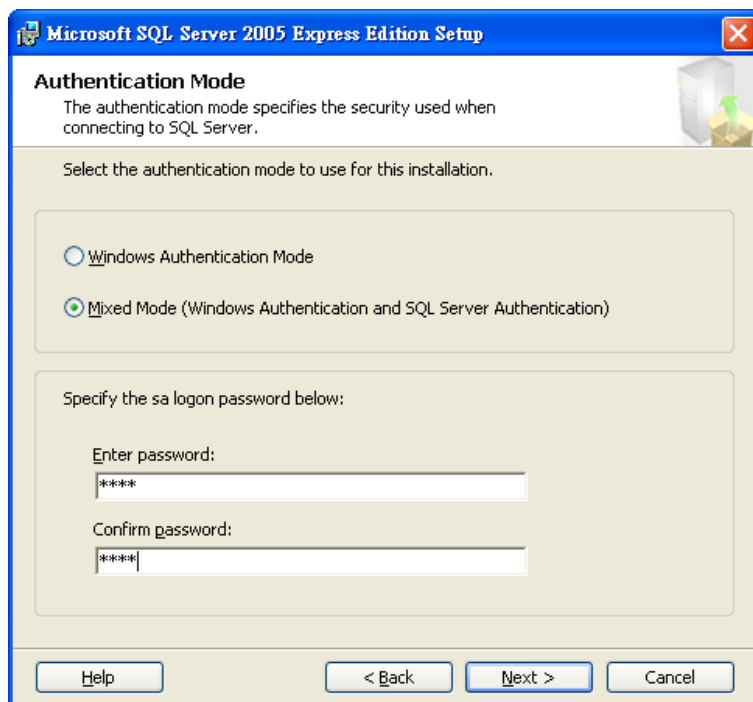
6th step, enter Name and Company, then click *Next*.



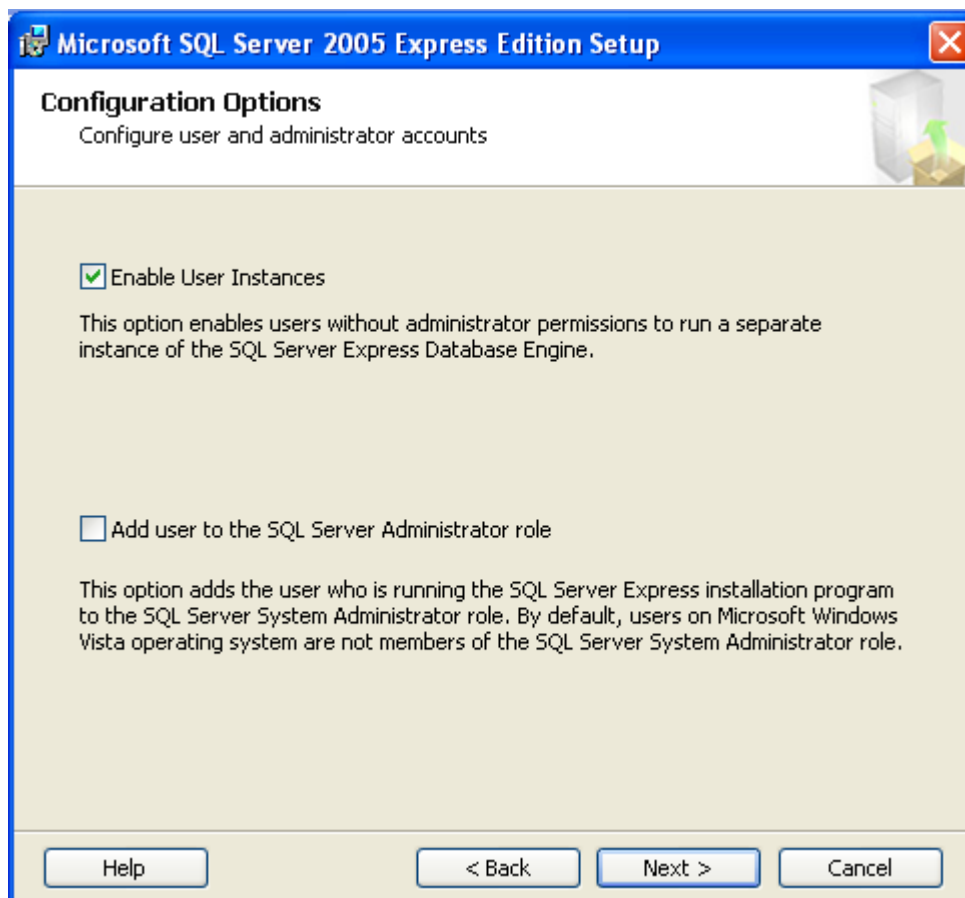
7th step, using default setting, click *Next*.



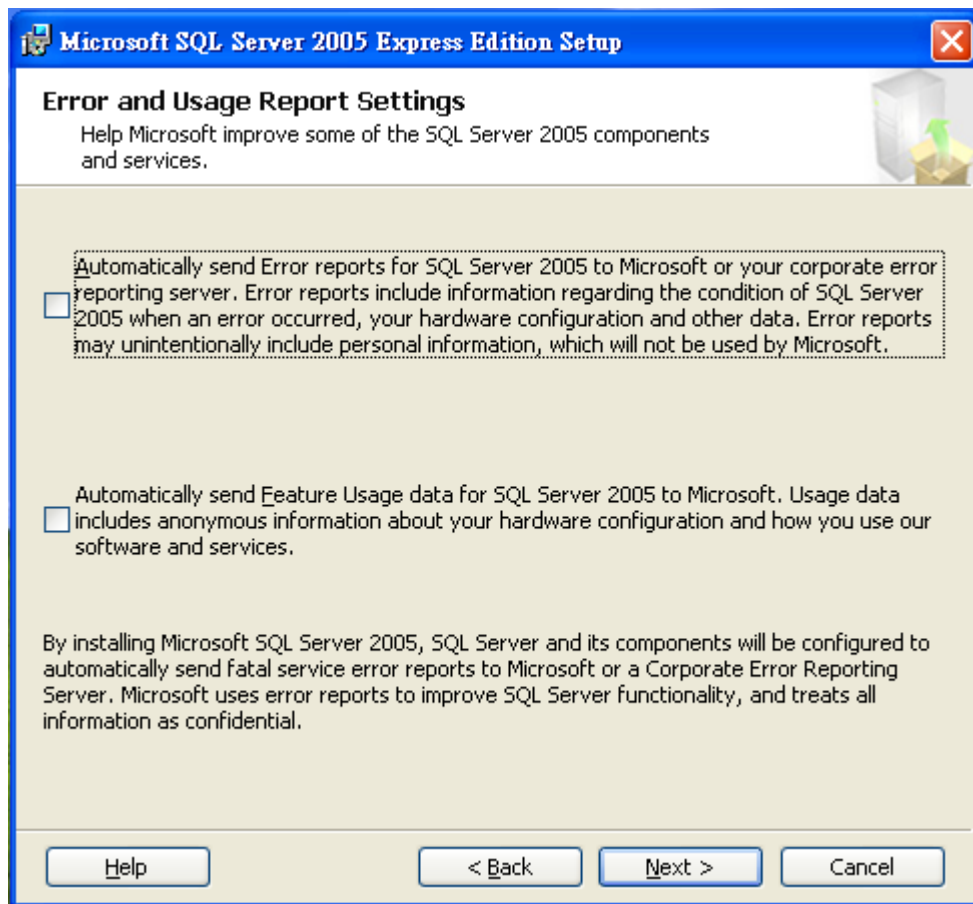
8th step, select *Windows Authentication Mode*, then click *Next*.



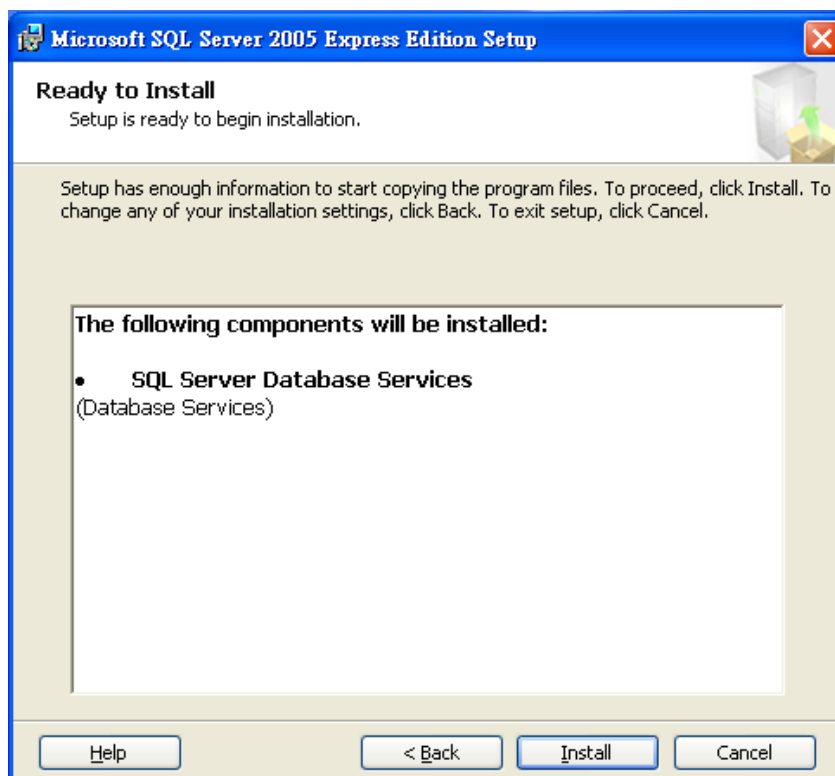
9th step, if your system is Windows Vista, please select *Add User to the SQL Server Administrator role*.



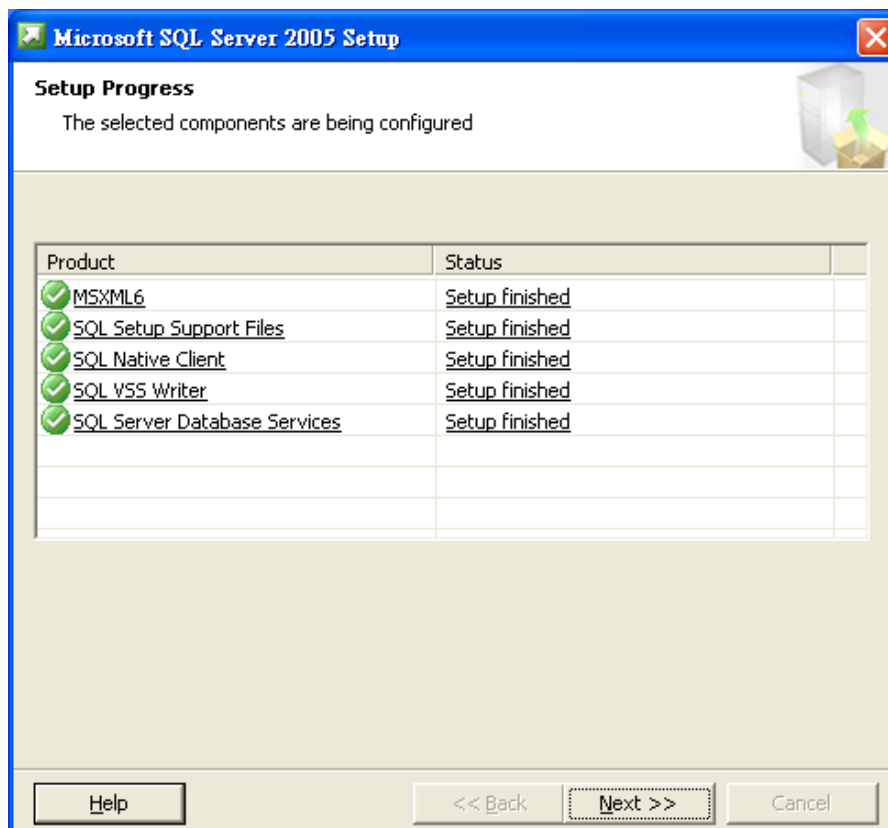
10th step, DO NOT select these two options. Direct to click *Next*



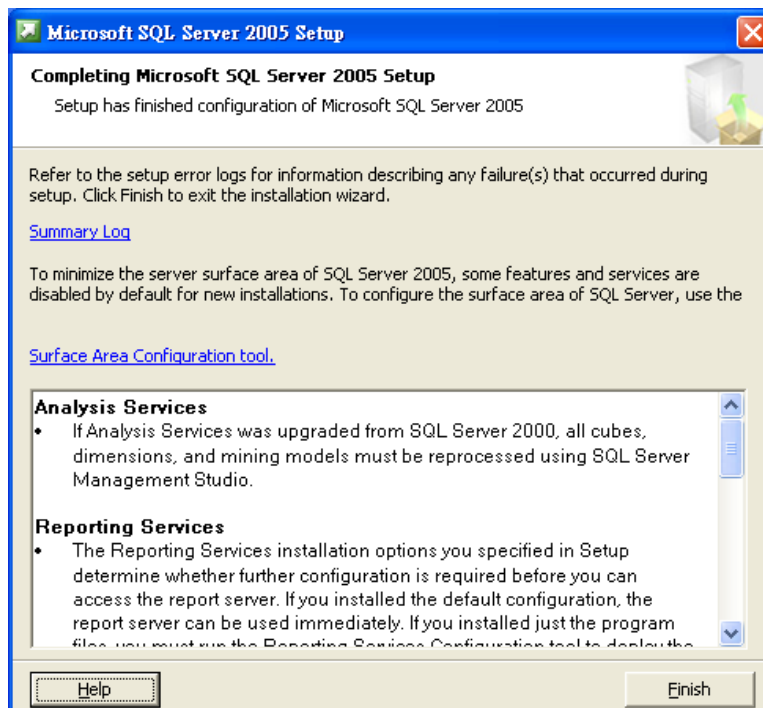
11th step, click *Install*



12th step, when all items finished, click *Next*



13th step, click **Finish** to complete the installation.

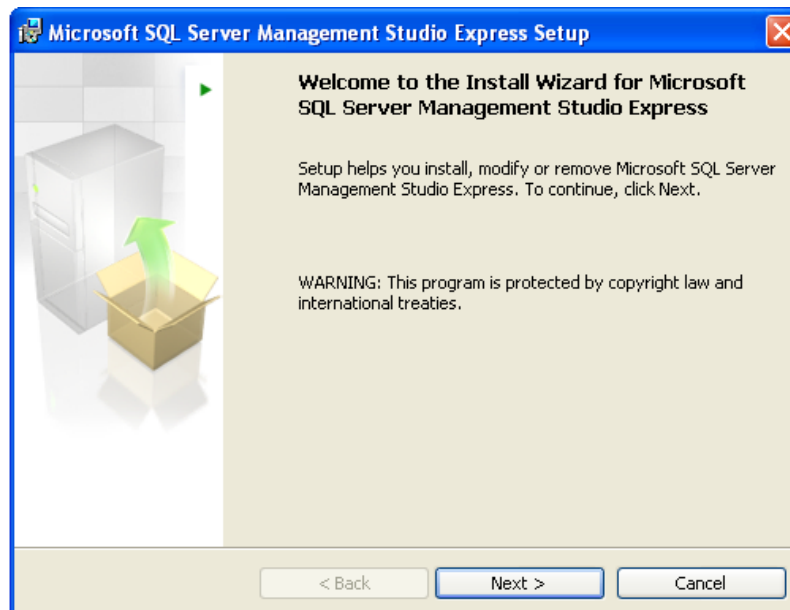


If needs to alter to the information bank the permission far-end to record please do refer the appendix III

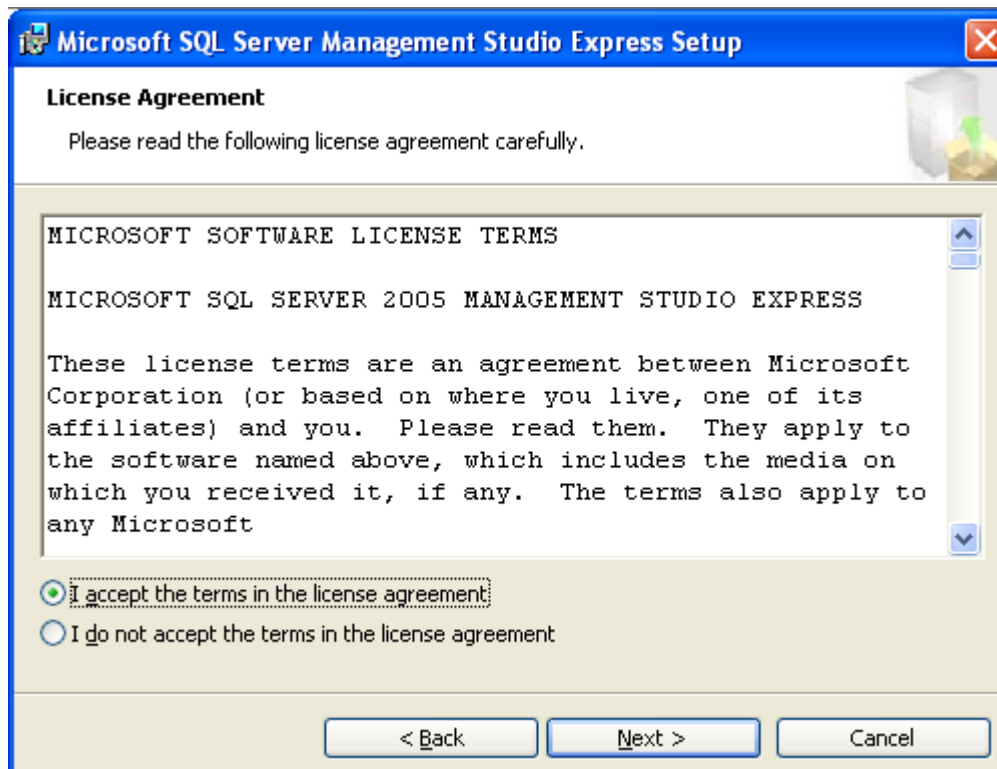
Installing Microsoft SQL 2005 Manager SP3

In the Installation menu, click *Install Microsoft SQL 2005 Manager SP3 for Windows* to start installation.

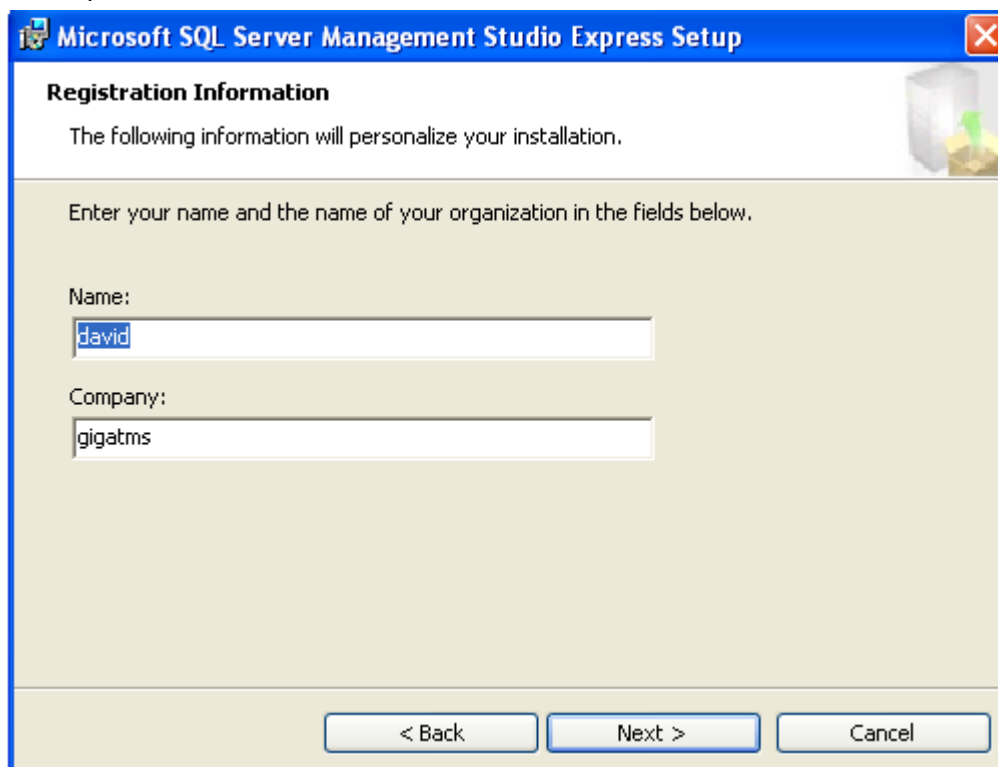
1th step, click *Next*.



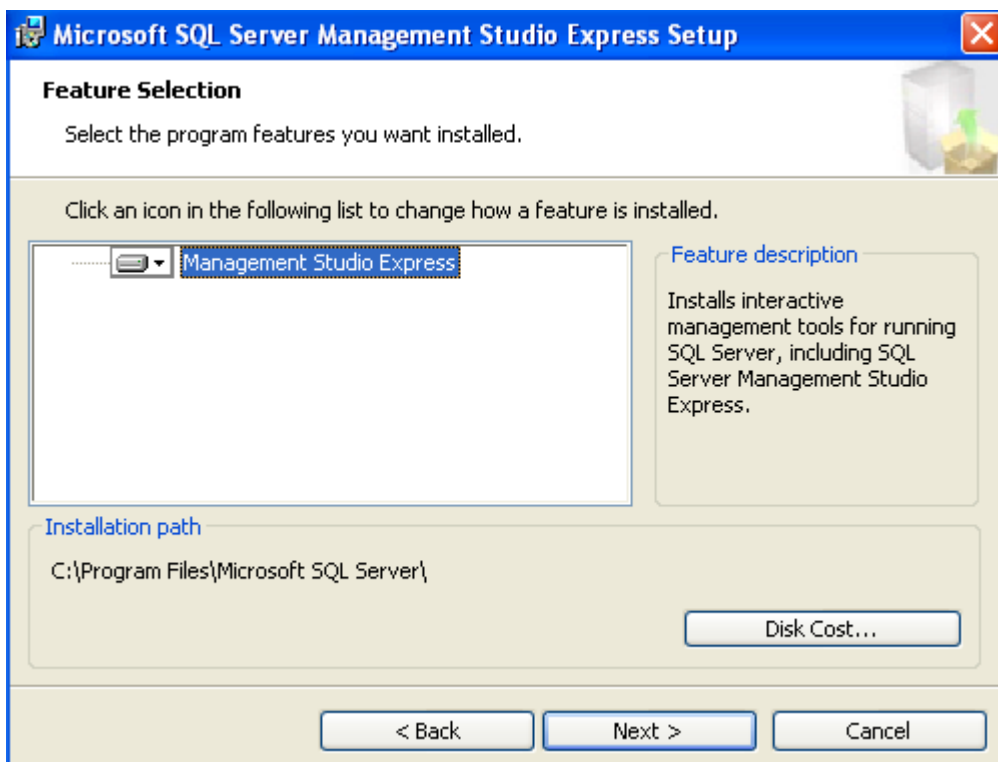
2nd step, click *I accept the terms in the license agreement*, then click *Next*.



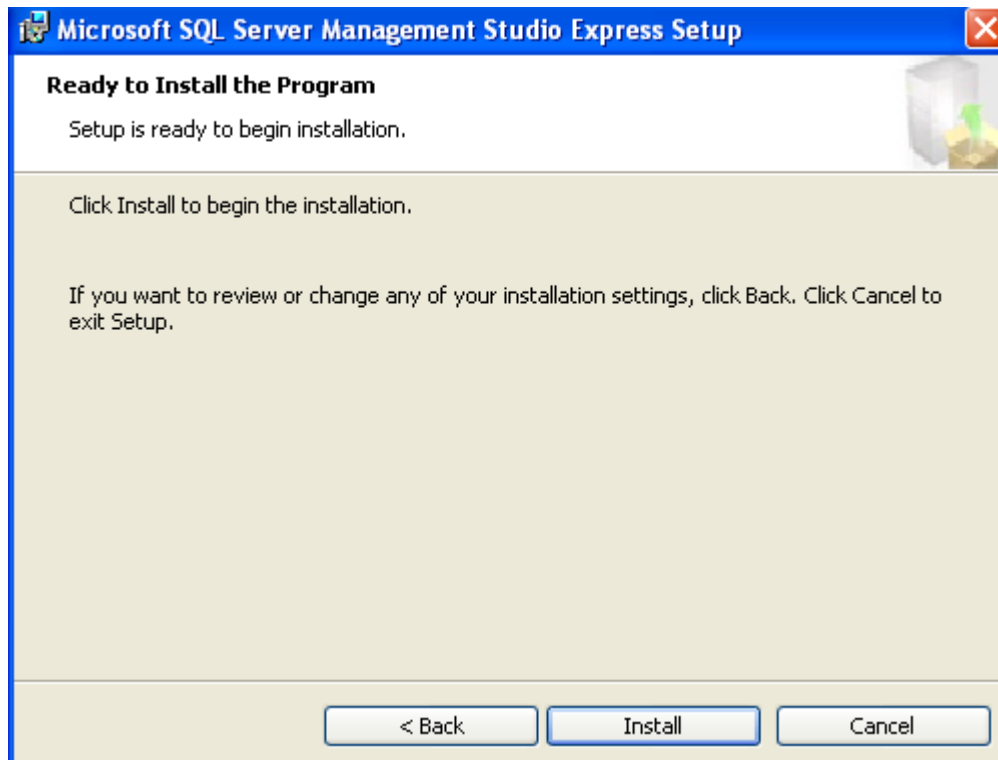
3rd step , click *Next*.



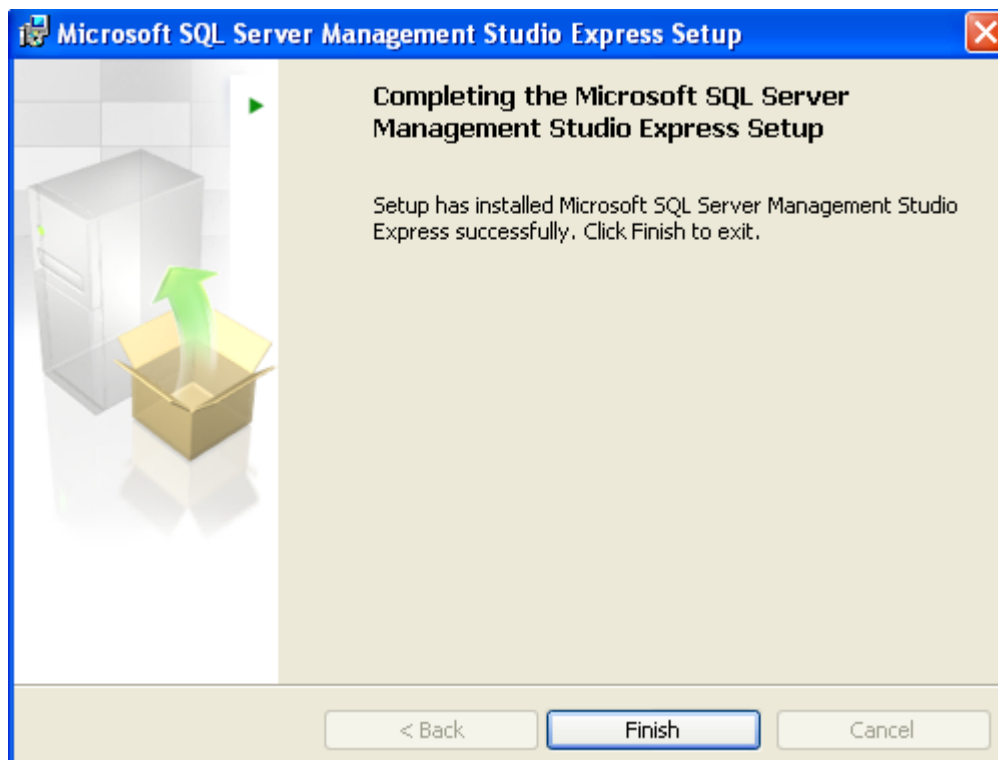
4th step, click *Next*.



5th Step, click *Install*.



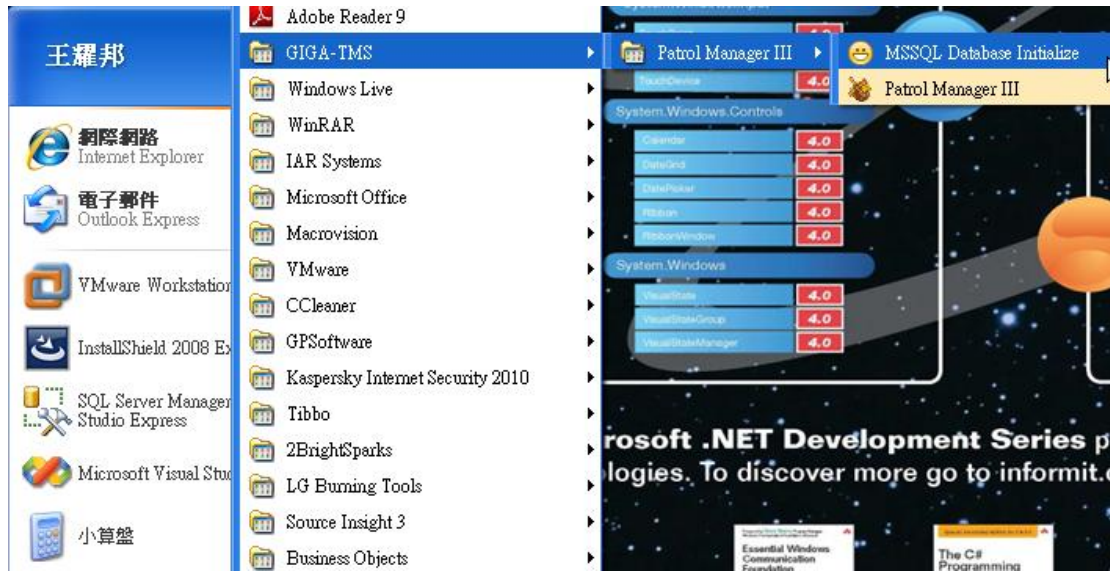
6th step, click *Finish* to complete installation.



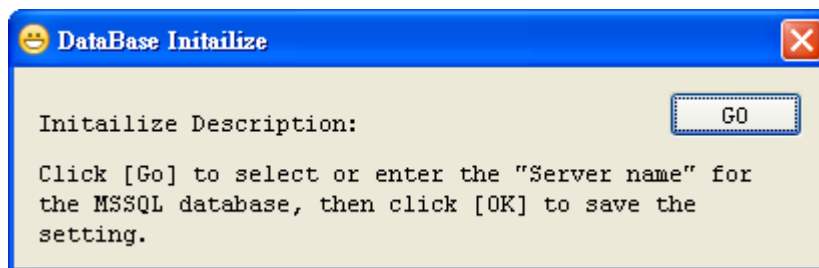
Initializing the Database

For the first launch of *Patrol Manager III*, it needs to initialize the database. Below are the steps:

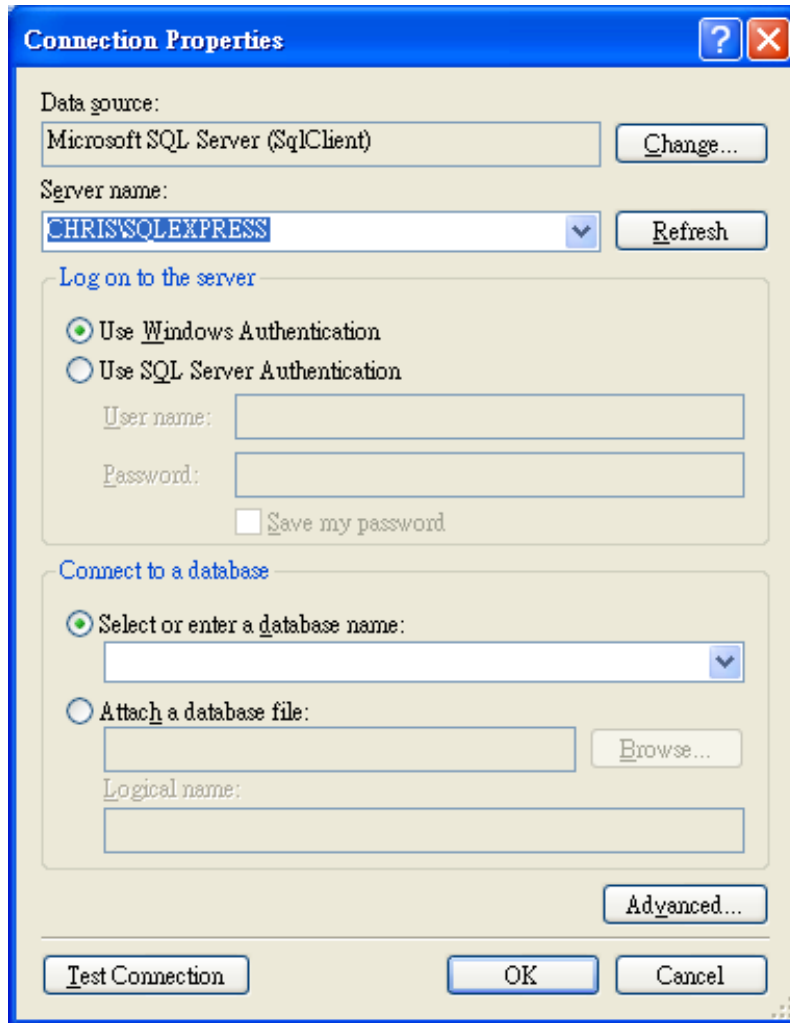
Load *MSSQL Database Initialize*.



Click **GO**



Select or Enter the *Server Name*.



Click *OK* to start the database initialization.

Once the initialization is completed, it will show the *Initialize OK* message.

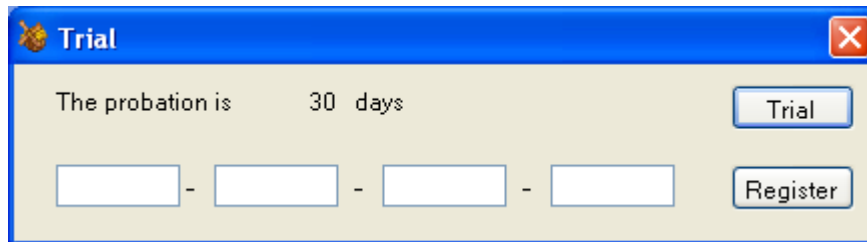


The IIS web server is also setting up well after the database initialization. Now it is able to view or print out the patrol data by the web browser (IE or Firefox). The hyperlink address is <http://localhost/PatrolManager>.

Running Patrol Manager III

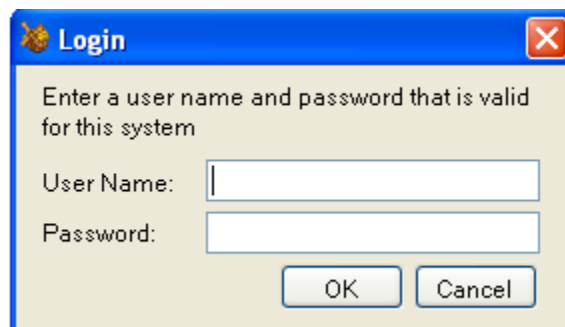
This topic will detail the interface and operation of *Patrol Manager III* program.

Product Registration



Enter the serial code and then click *Register* to activate the program, or click *Trial* for 30 days uses.

Login



For the first launch, please enter the pre-set user name **Admin** and password **0000**.

The user name and password can be modified later on if login succeeds.

Note: The user name is case sense.

Toolbar

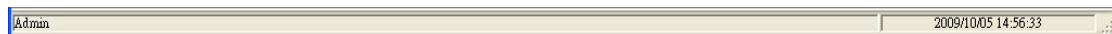


The Toolbar provides a short cut for often use functions. From left to right, each button is used for:

1. Open File
2. Save File
3. Browse Patrol Data
4. Print

5. Print Preview
6. Define Checkpoint
7. Define Patrolman
8. Define Event
9. Define Route
10. Customer Data
11. Patrol Report

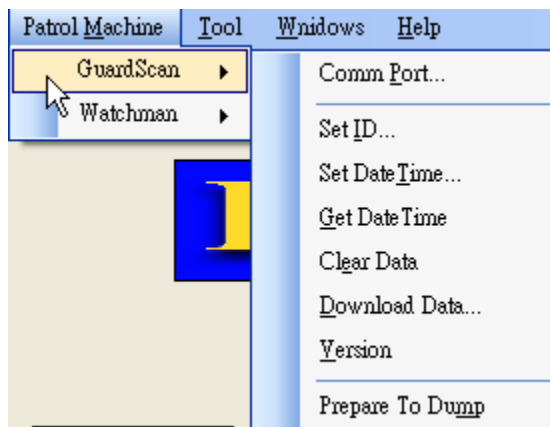
Status bar



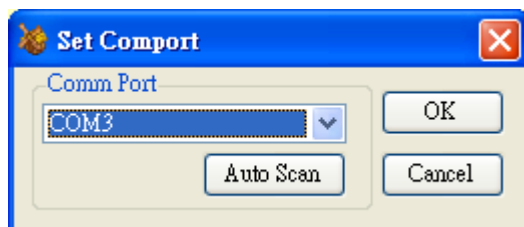
Left panel shows user account. Right panel shows the date and time of the system.

Patrol Tour Terminal- GuardScan Series

Below will detail the operation of patrol tour terminal – *GuardScan* Series.

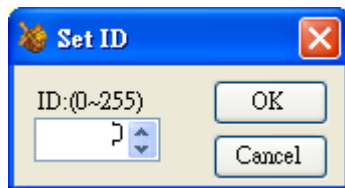


Communication Port



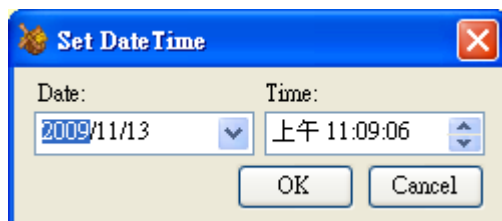
Make sure the terminal is powering on and with communication cable attached to PC. Selecting *Comm Port* where the *GuardScan* terminal is connected. Or click *Auto Scan* to detect automatically. Click *OK* to save the setting.

Setting ID



Each terminal can be assigned an *ID* number; the value is ranged from 0 to 255.

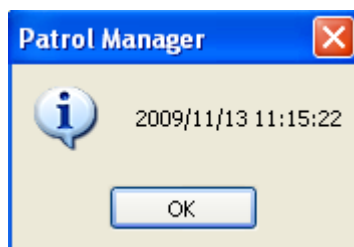
Setting Date and Time



The date and time value of terminal should synchronies to PC or user's local time. Click *OK* to set up the *RTC* (real-time clock) of terminal to be specified value.

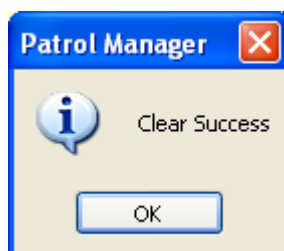
Getting Date and Time

Reading the *RTC* value of terminal, and show the date time value in the window.



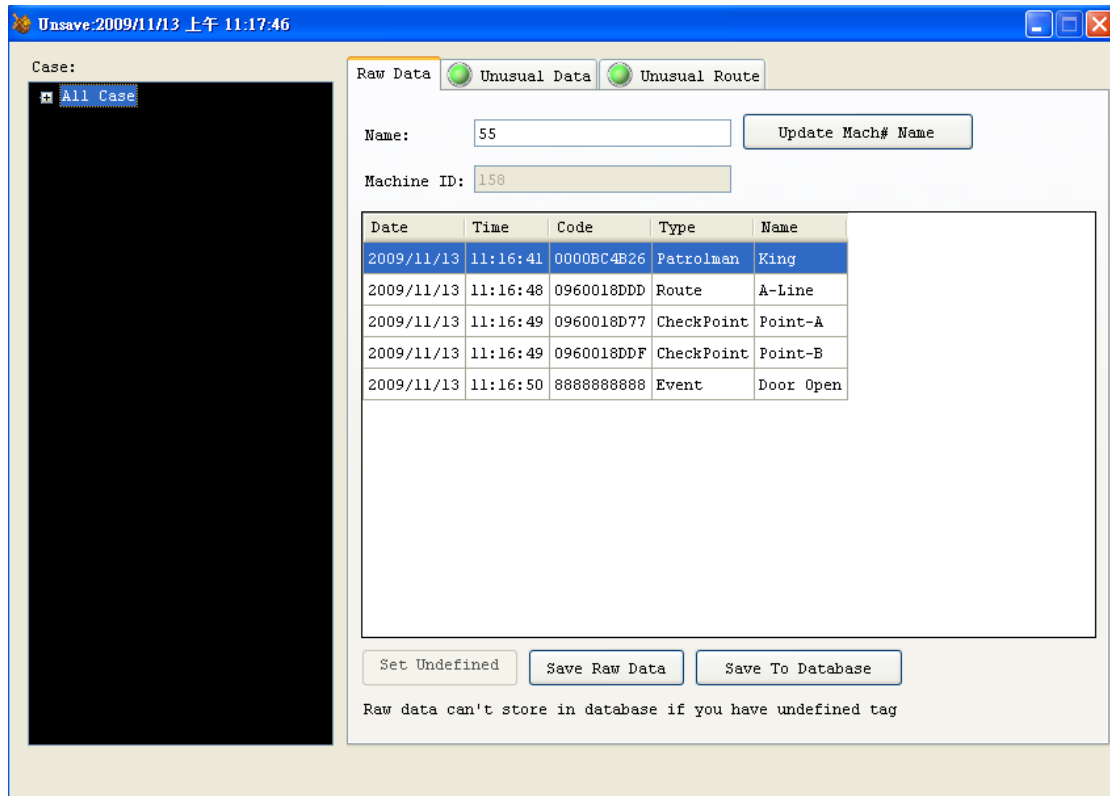
Clearing Patrol Data

Clearing all the patrol data in the internal memory of terminal. If *OK*, show succeed message.



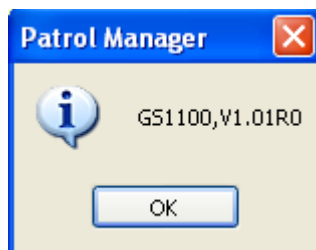
Downloading Patrol Data

Once complete the downloading process, a Raw Data window will pop up and show the patrol data. The operation of this window will detail in later section.



Getting Firmware Version Information

Displaying the firmware version of terminal.

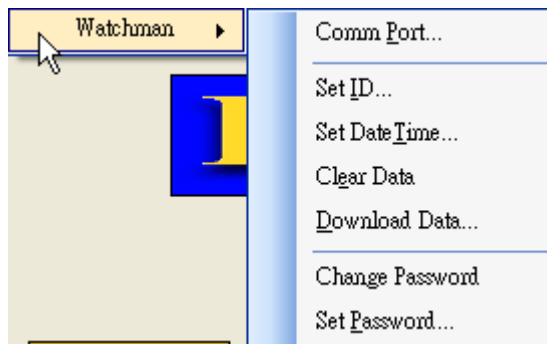


Recovering Patrol Data

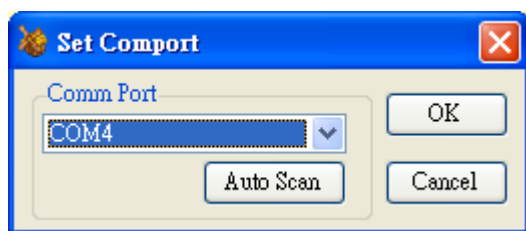
Guard Scan terminal is able to store 14320 records. In normal use, the data will be clear if is downloaded OK. In some cases needed, it is allowed to run this command to recover all the 14320 records data.

Patrol Tour Terminal - Watchman Series

Below will detail the operation of patrol tour terminal – Watchman Series.

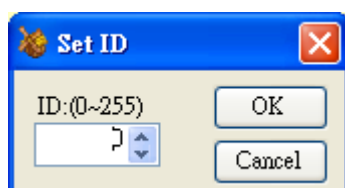


Communication Port



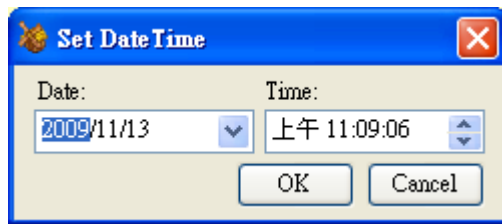
Make sure the terminal is powering on and with communication cable attached to PC. Selecting *Comm Port* where the *Watchman* terminal is connected. Or click *Auto Scan* to detect automatically. Click OK to save the setting.

Setting ID



Each terminal can be assigned an *ID* number; the value is ranged from 0 to 255.

Setting Date and Time

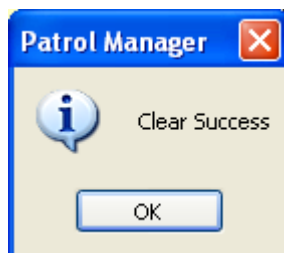


The date and time value of terminal should synchronies to PC or user's local time. Click *OK* to set up the *RTC* (real-time clock) of terminal to specified value.

Note: For *Watchman* terminal, the patrol data in internal memory must be clear before setting the date and time value, otherwise if it will be failed.

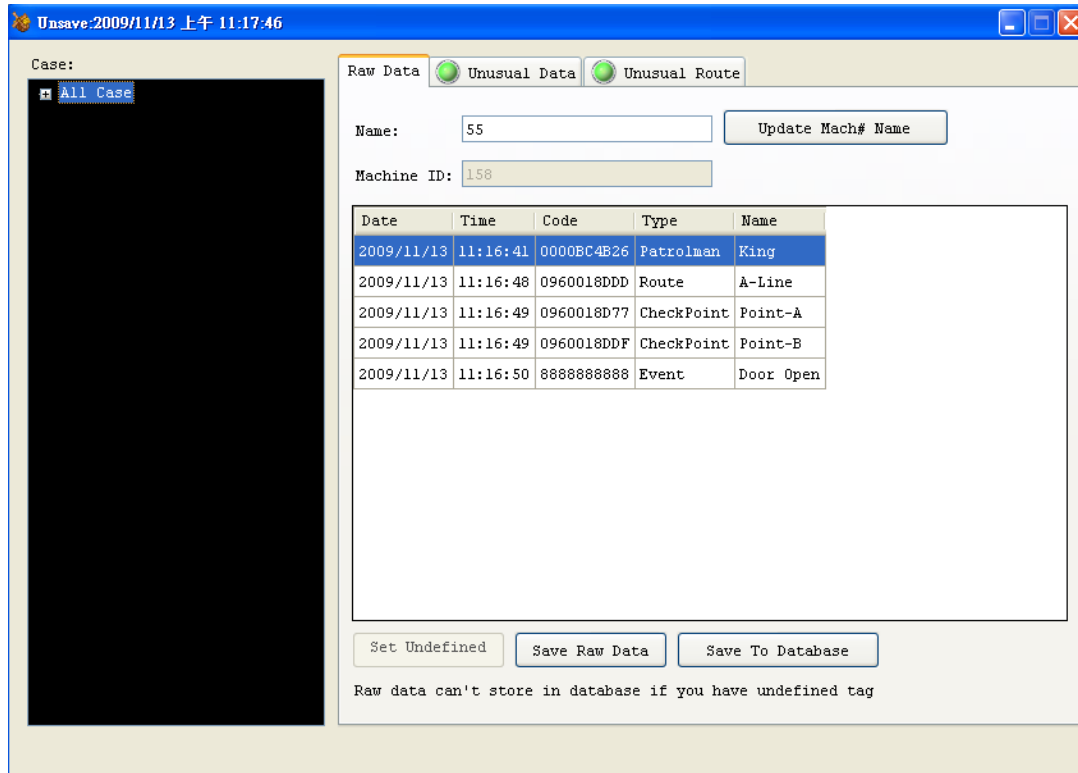
Clearing Patrol Data

Clearing all the patrol data in the internal memory of terminal. If *OK*, show succeed message.

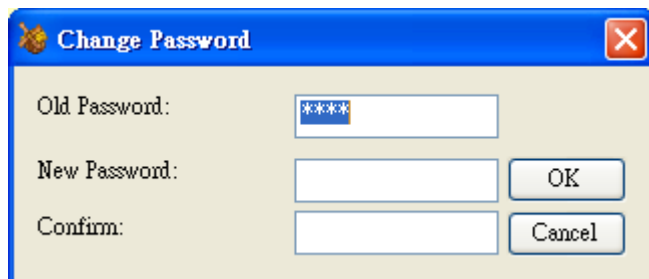


Downloading Patrol Data

Once complete the downloading process, a Raw Data window will pop up and show the patrol data. The operation of this window will detail in later section.



Changing Password



The old password is required while changing to a new password. The pre-set password for *Watchman* terminal is **0000**.

Note: If the password of connected *Watchman* is changed and not recognized by program, please

Setting Password

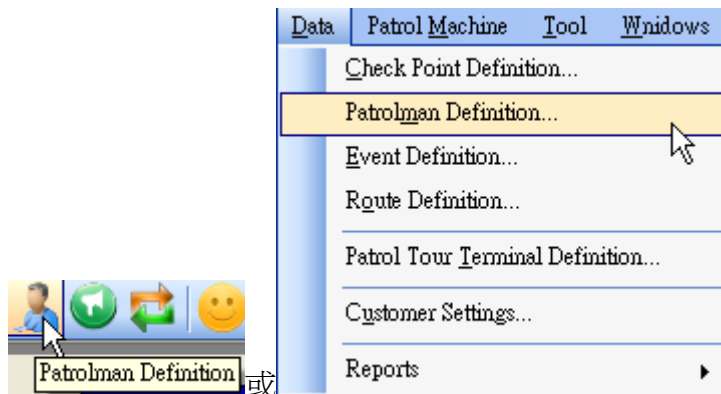
In default, program will use **0000** as *Watchman* terminal login password. If is changed, then it needs to tell program what the password is to prevent downloading the patrol data failed.

Card Definition

There 4 types can be defined for RFID card- 1) Patrolman, 2) Route, 3) Checkpoint, 4) Event. Below sections will detail how to define these 4 types RFID card.

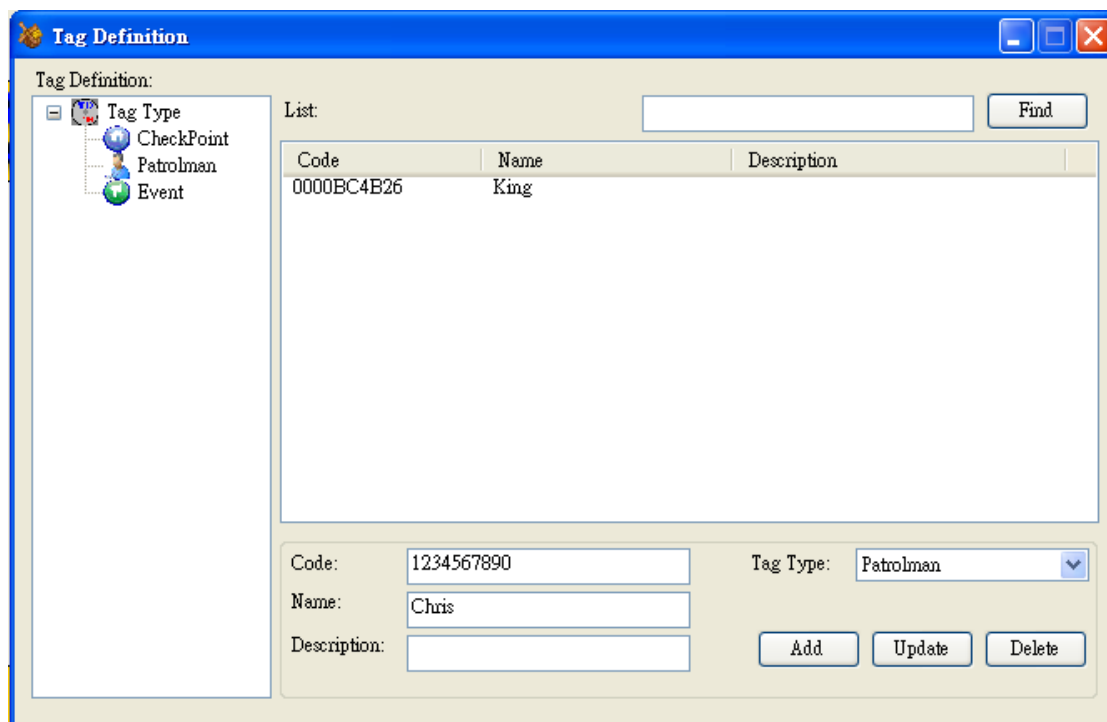
Defining Patrolman

To define a card as patrolman, from *Data*, select *Patrolman Definition*.



Adding Patrolman

Enter the *Code* (10 digits) and *Name*, then click *Add*.



Modifying Patrolman

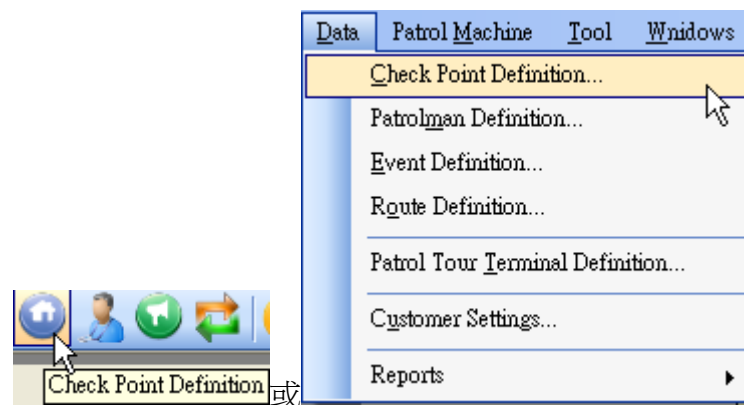
Double-click the patrolman, enter modified *Code* or *Name*, and click *Update* to complete the modification.

Delete Patrolman

Select patrolman (support multi-selection), click *Delete* to remove from system.

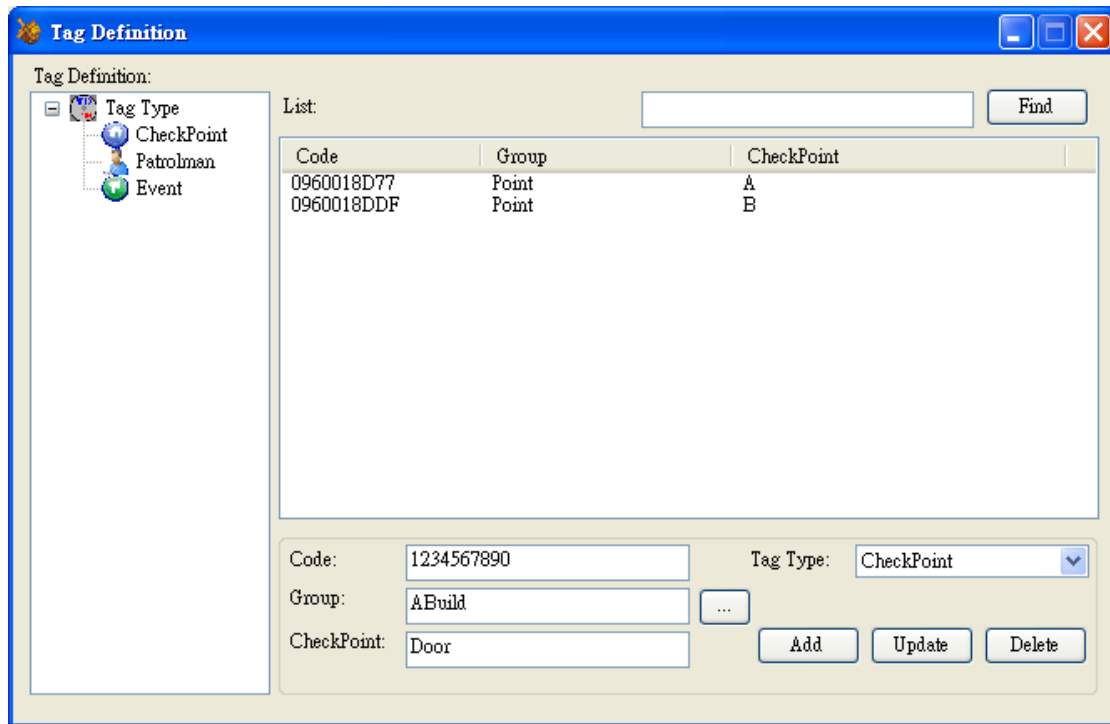
Defining Checkpoint

To define a card as checkpoint, from *Data*, select *Checkpoint Definition*.



Adding Checkpoint

Enter the *Code* (10 digits), *Group* and *Checkpoint*, then click *Add*. Click [...] button can select existed defined groups.



Modifying Checkpoint

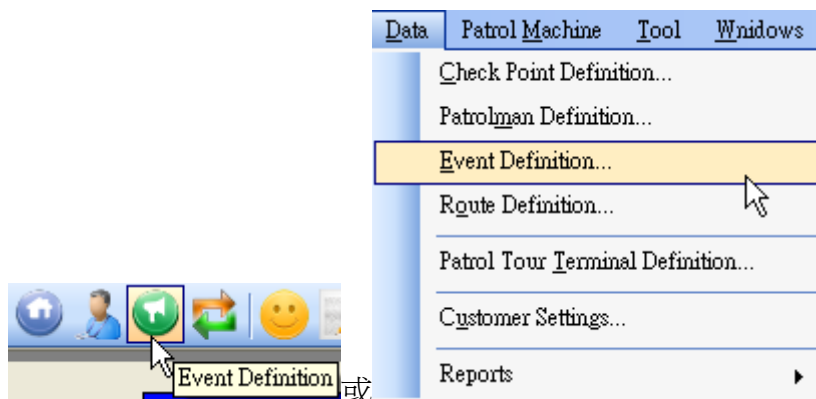
Double-click the checkpoint, enter modified *Code*, *Group* or *Name*, and click *Update* to complete the modification.

Deleting Checkpoint

Select checkpoint (support multi-selection), click *Delete* to remove from system.

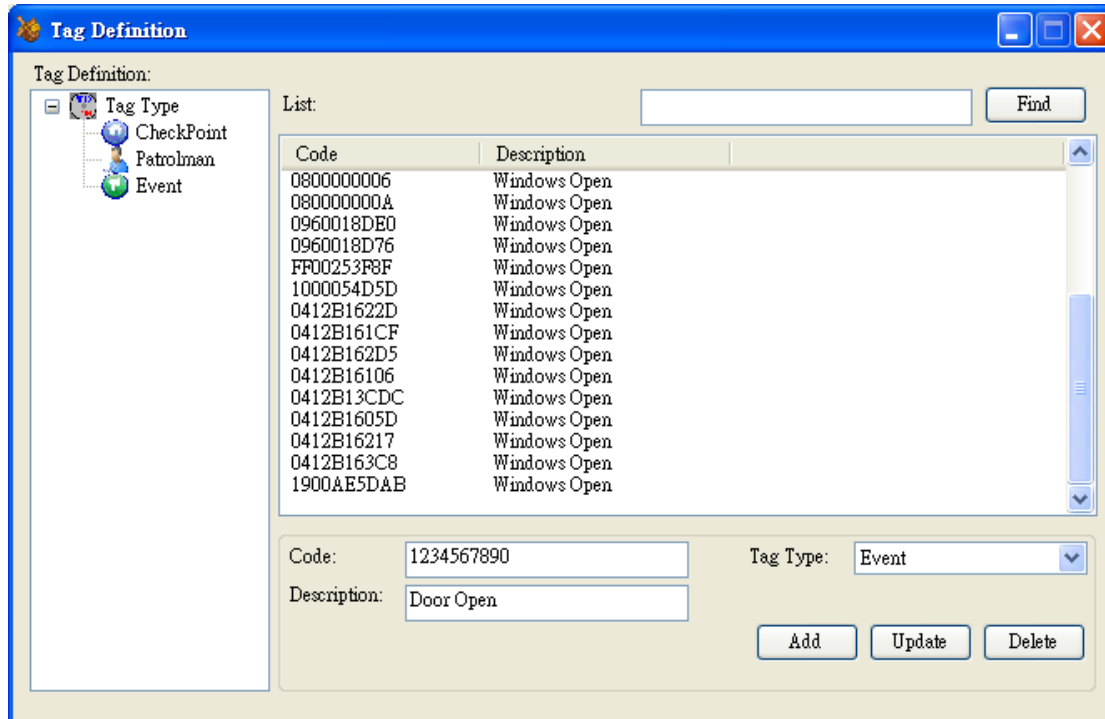
Defining Event

To define a card as event, from *Data*, select *Event Definition*.



Adding Event

Enter the *Code* (10 digits), *Description*, then click *Add*.



Modifying Event

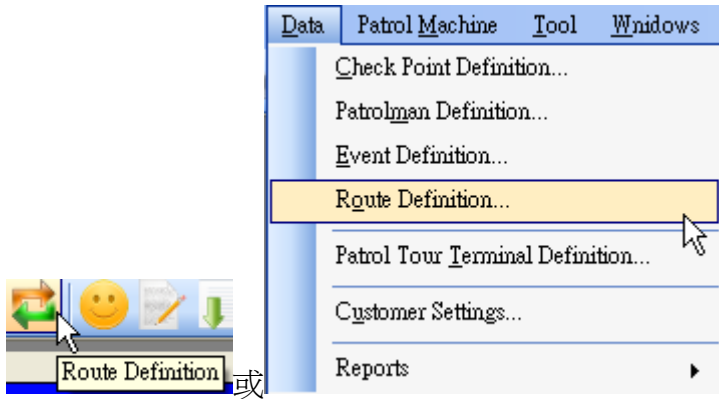
Double-click the checkpoint, enter modified *Code* or *Description*, and click *Update* to complete the modification.

Deleting Event

Select event (support multi-selection), click *Delete* to remove from system.

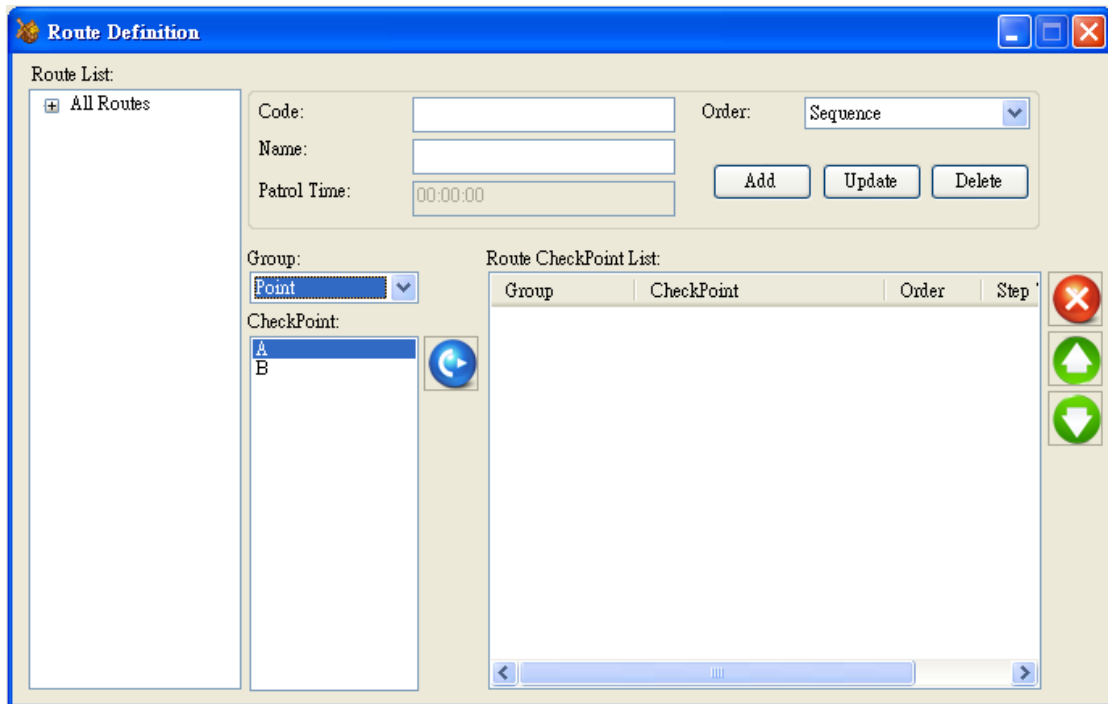
Defining Route

To define a card as event, from *Data*, select *Route Definition*.



Adding Route

Enter the *Code* (10 digits), *Name*, then click *Add*.



To add checkpoints to select route, using below buttons to meet the need.



add left side checkpoint to route.

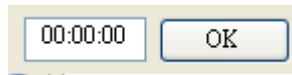


set up the patrolling sequence.



remove checkpoint from the route.

Patrol Time: Double-click the text box, enter the desired time then click *OK* to save the setting.



Modifying Route

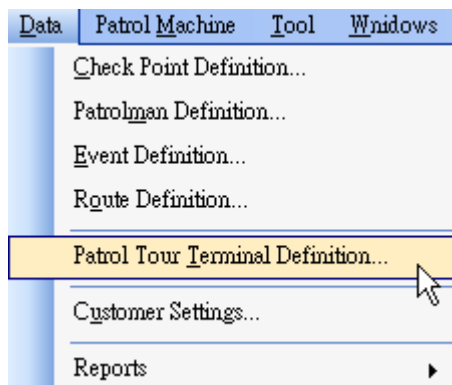
Select a route to be modified, then enter the *Code* or *Description*, and click *Update* to complete the modification.

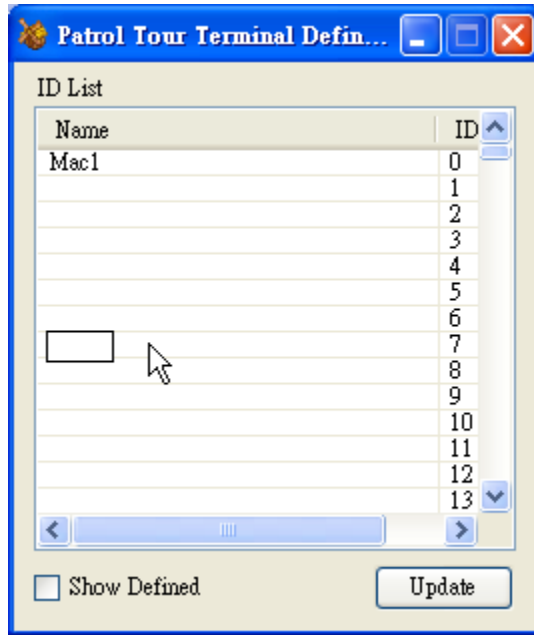
Deleting Route

Select a route; click *Delete* to remove from system.

Defining Patrol Tour Terminal

To define a card as event, from *Data*, select *Patrol Tour Terminal Definition*.



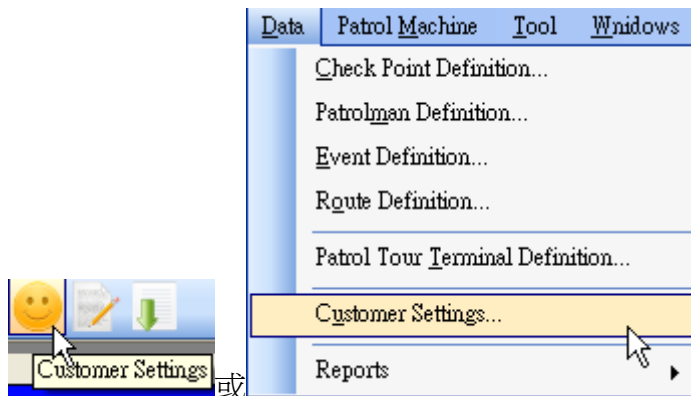


Determine which ID to be defined, and then click its left side cell. When a text appeared, enter the *Name* and then click *Update*.

Note: The ID value is ranged from 0 to 255. The ID name is empty means this ID has not been defined yet.

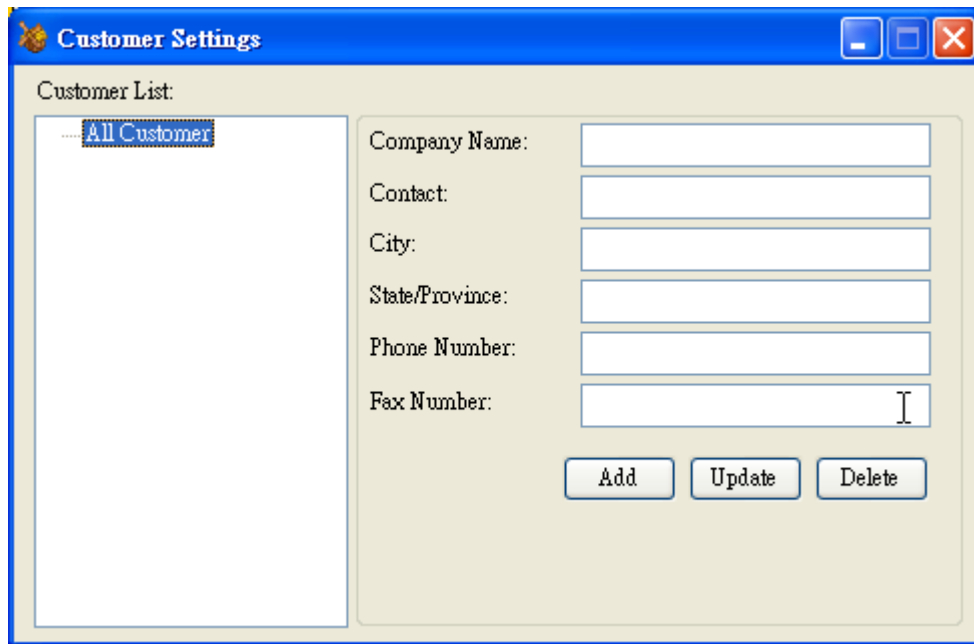
Customer Data

To set Customer data, from *Data*, select *Customer Settings*.



Adding Customer

Enter the customer information in each field, click *Add*.



Modifying Customer

Select a customer to be modified. After completing the modification, click *Update* to save the setting.

Deleting Customer

Select a customer to be deleted, click *Delete* to remove from the system.

Tools

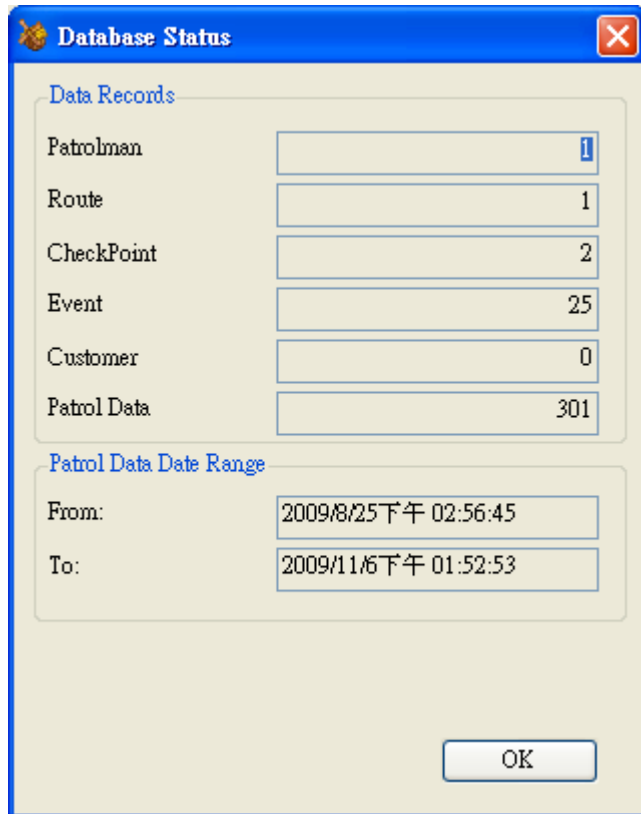
This topic details all the functions included in the Tools.

Database Tools

The functions related database.

Database Status

Displays the details information of the database.

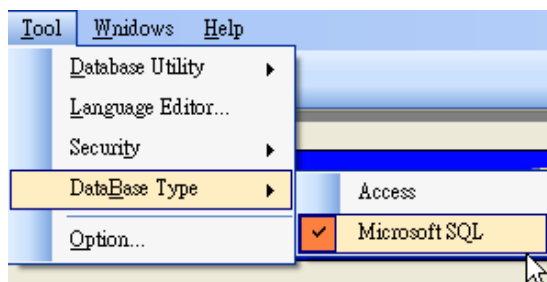


Clearing Patrol Data

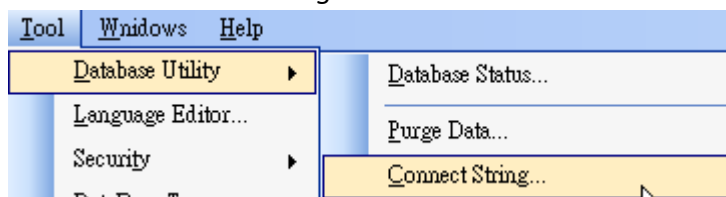
Program will remove all the patrol data from database that specified by user.

Connection String

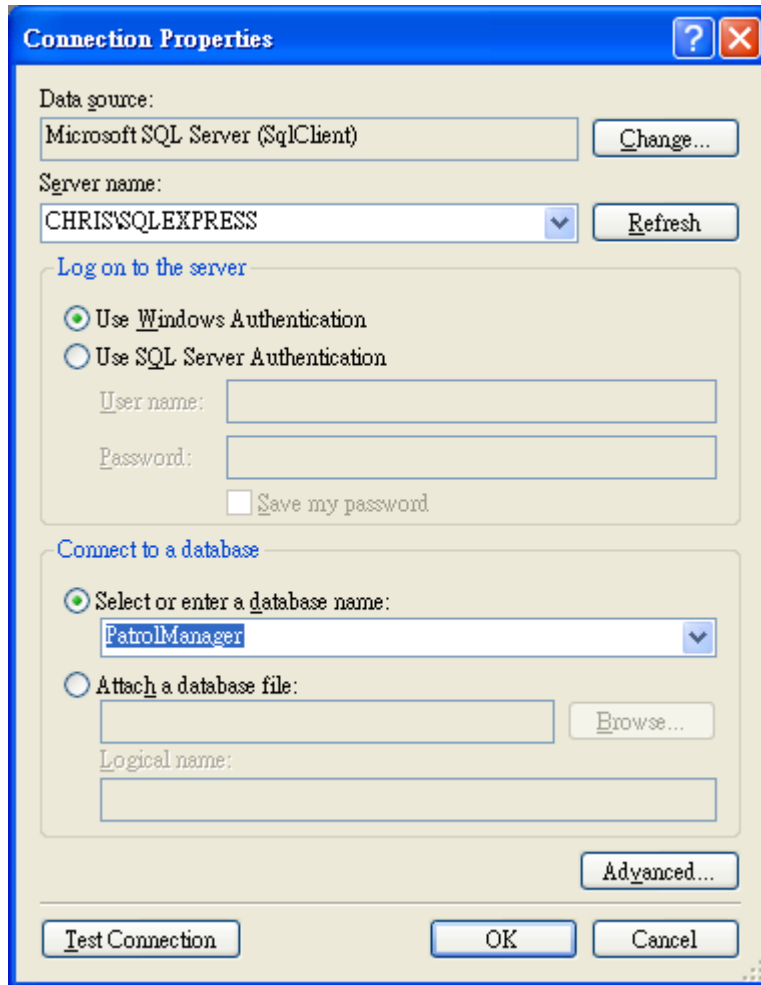
This function is only for *Microsoft SQL* uses. If *Microsoft SQL* is not the database source, please use *Patrol Manager III* to change database type to *Microsoft SQL*.



Then click *Connect String*.



Enter the *Server Name* and *Database Name*; click *OK* to complete the setting.



Backing up Database

Only for Microsoft Access is the database source. This function will copy the database to a specified file.

Restoring Database

Only for Microsoft Access is the database source. This function will restore specified backed up database file to be system database.

Compacting Database

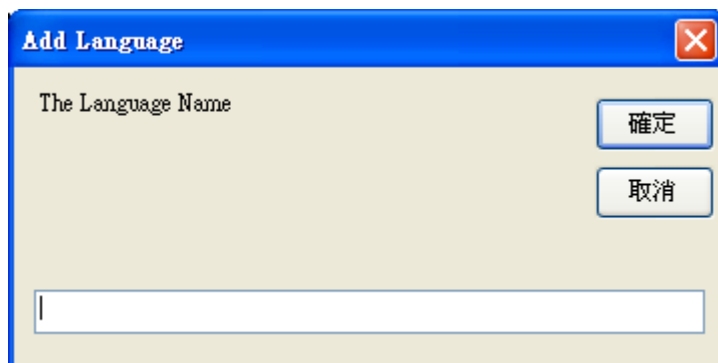
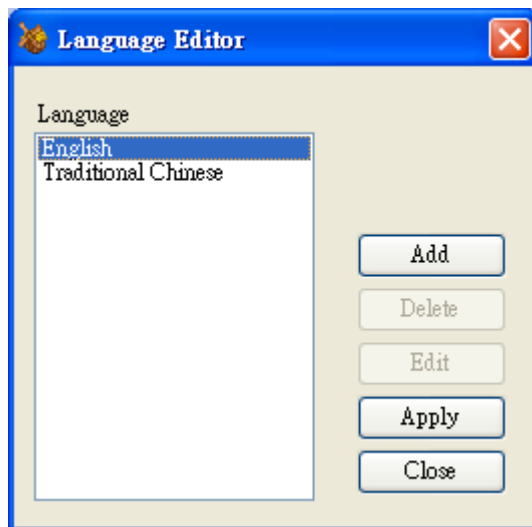
Only for Microsoft Access is the database source. This function will compact the database, which will make the file size smaller and speed up accessing the database.

Repairing Database

Only for Microsoft Access is the database source. This function will repair the database file.

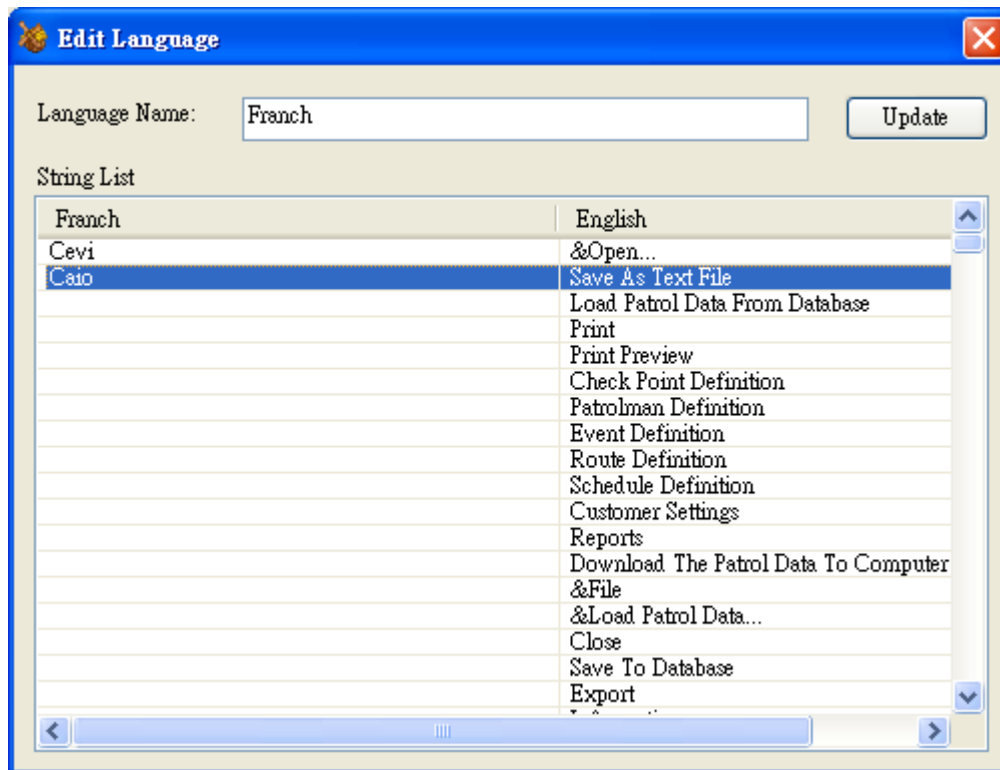
Language Editor

Adding new language: click *Add*, and then enter the *Language Name*. Click *OK* to complete the addition.



Editing Language:

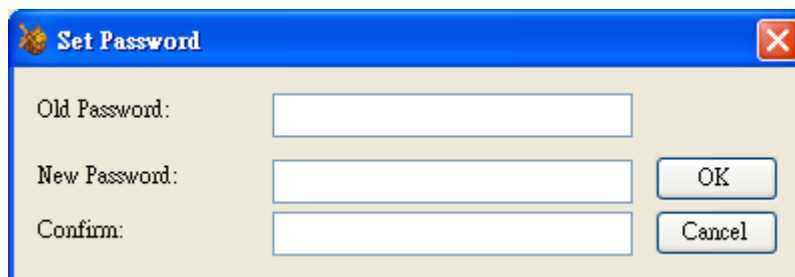
Select a language, click *Edit*. Enter the native string in first column compared the English column.



Security

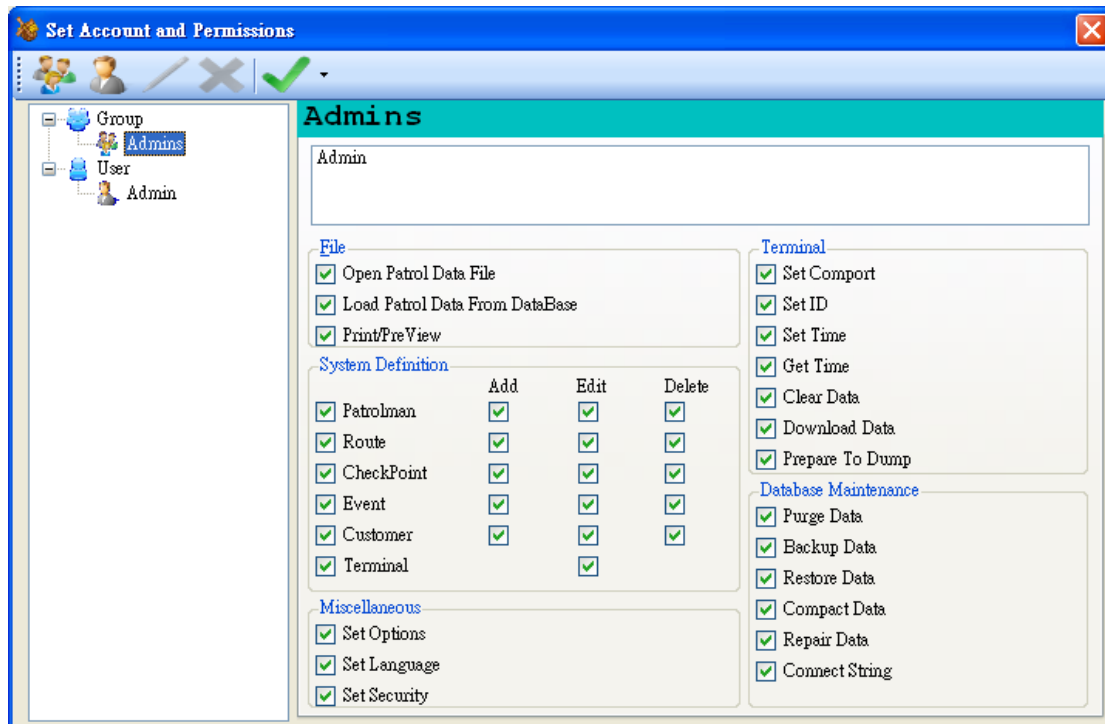
Setting Password

Changing Login password



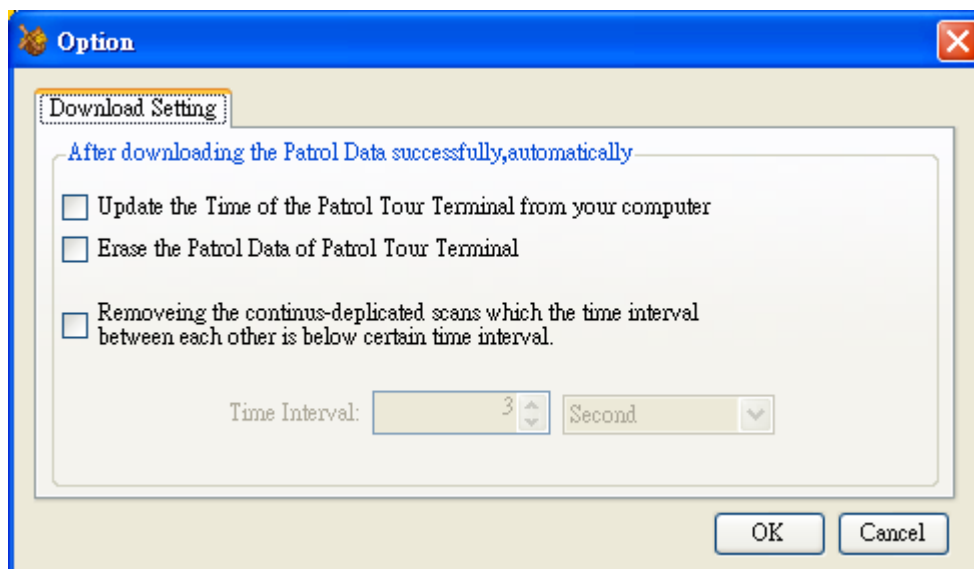
Setting the Account and Permission

Every user is belonged to a specified Group, which limits the access permission of Patrol Manager III program. While the permission of Group is changed, the users who are belonged to this group is also changed too.



Options

In the *Download Setting* tab, it sets the automation process after downloading patrol data successfully. The automation process can be view at below screen shot:

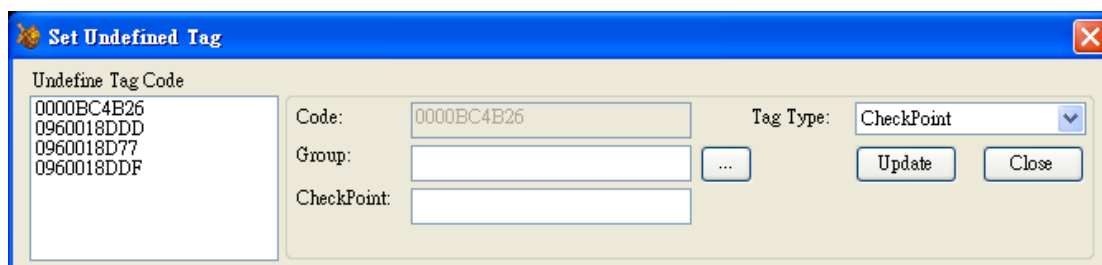


Raw Data

The data stored in the internal memory of terminal is called *Raw Data*.

Defining Unknown Card

If there is any unknown (undefined) tag code in the downloading raw data, please define it first. If not, the raw data cannot be saved into the database.



Saving Raw Data to Text File

Click *Save* icon of toolbar to save the raw data to a specified text file.

Opening Raw Data File

Click *Open* to load a pre-saved raw data file.



Saving Raw Data to Database

After viewing the raw data, the next step is saving it to database. If the terminal ID is not defined, it is not allowed to save into database. The saving process will filter the duplicated patrol data automatically.

After the raw data is saved into database, these data will be converted to a more readable data and cannot be converted back.

Reports

There to kinds of patrolling data reports provided by *Patrol Manager III* – 1) *Patrol Data Report*. 2) *Raw Data Report*.

Patrol Data Report

Once the *Raw Data* is converted and saved to the database (Access or MSSQL), then you can use the *Patrol Data Report* (more than 15 reports) to print it out in any kind of aspect, such visit frequency, missing checkpoints, exception data... etc.

Raw Data Report

The raw data is the data that has not been converted and saved in database yet. It is in very raw mode, not so readable. But you also can print it out with definition field (name or description).

Exception in Raw Data

If all the raw data is defined, then program will go for analyzing the raw data. If there is any exception in route or data, then it will display the red light, otherwise the green light is displayed.



Exception data: The tag code is undefined or not a completed raw data.

Exception route: A route is known but not know the patrolman. If this exception occurs, it is not allowed to assigned a patrolman to this route.

The Rule of Analyzing Raw Data

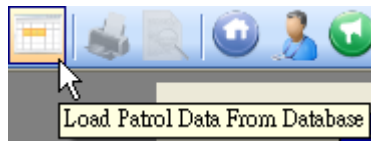
1. Treating patrolman is a separator to complete a route in raw data, if the patrolman is missing, then it is not able to create a route.
2. When get route tag, start a new route data, if the following codes don't include patrolman tag, it will be treated as an exception.
3. After creating a new route with patrolman, the following checkpoint tag will belong to this route.
4. If getting event tag, it will treat as last checkpoint event.
5. For the removed continuously-duplicated tag codes, these codes will be added in the exception records.
6. The discarded patrolman (without any route belonged) will be added in the exception records.
7. The route without any checkpoint will be added in the exception records.
8. If a patrolman owns more than two routes, then only the first route will be kept,

the later ones will be added in the exception records.

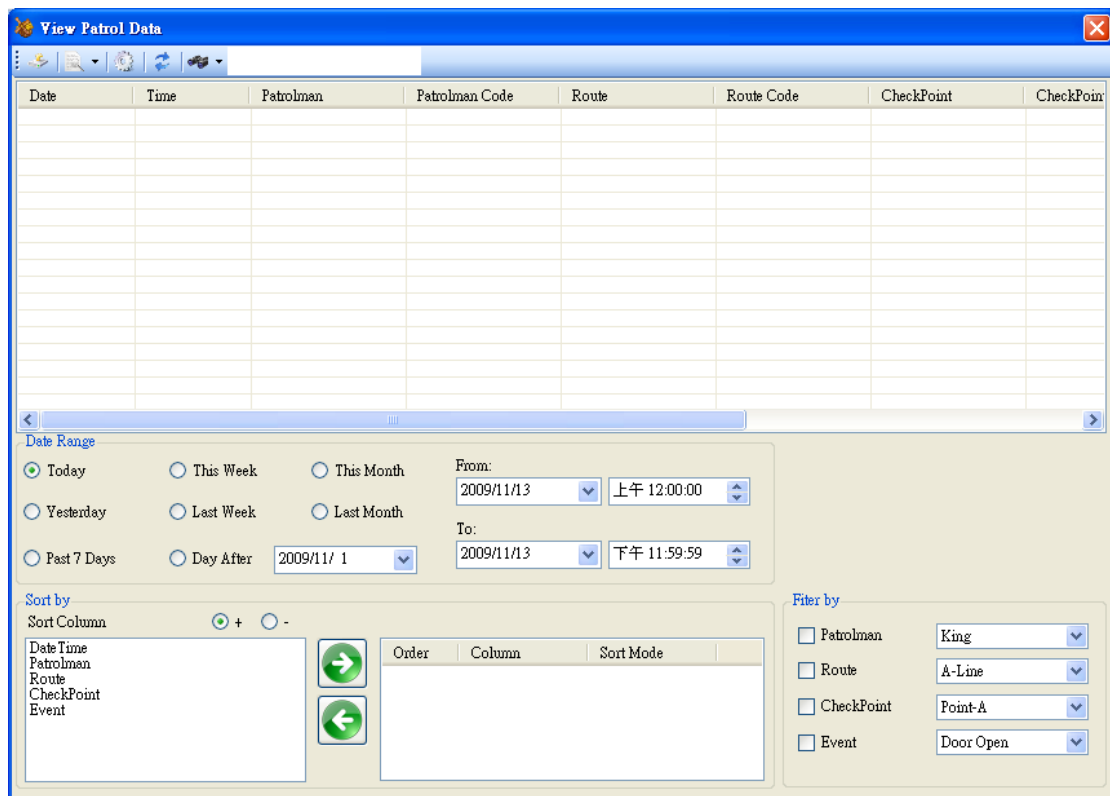
Patrol Data

Viewing the Patrol Data

Click *Load Patrol Data from Database*



In the *View Patrol Data* window, you can view the historical patrol data.



Below are the components in this window.

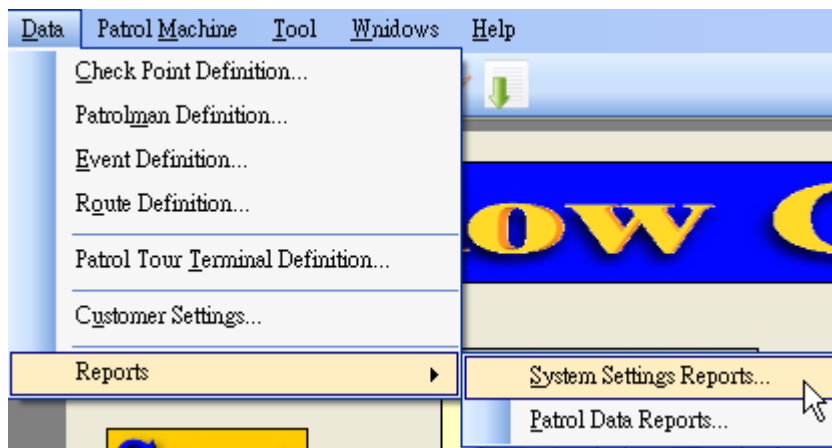
- **Date Range:** Filter the viewing patrol data in specified date range.
- **Sort by:** Select the sorting filed to be ascending or descending.
- **Filter by:** Select the filter value with specified filed.
- **Export:** Save the patrol data out to a text file.
- **Print:** Print out the patrol data.
- **Refresh:** Reload the patrol data according to the filter and sort settings.

Reports

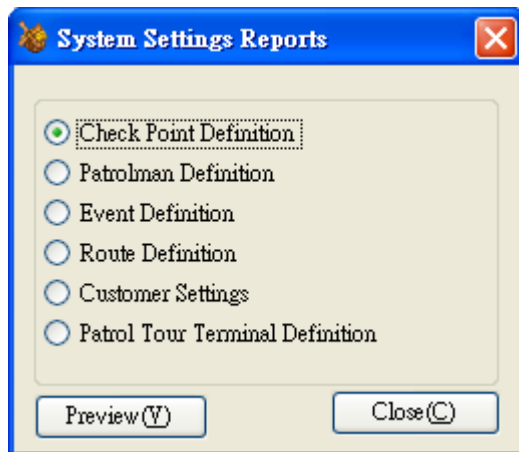
Patrol Manager III provides 6 system reports and 19 patrol data reports.

System Reports

To print out the system reports, from *Data/Reports*, click *System Settings Reports*

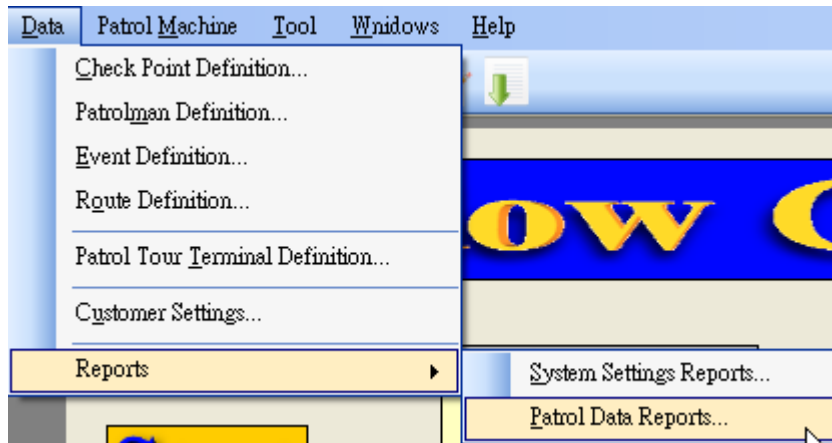


The 6 system reports are showing as below:



Patrol Data Reports

To print out the system reports, from *Data/Reports*, click *Patrol Data Reports*



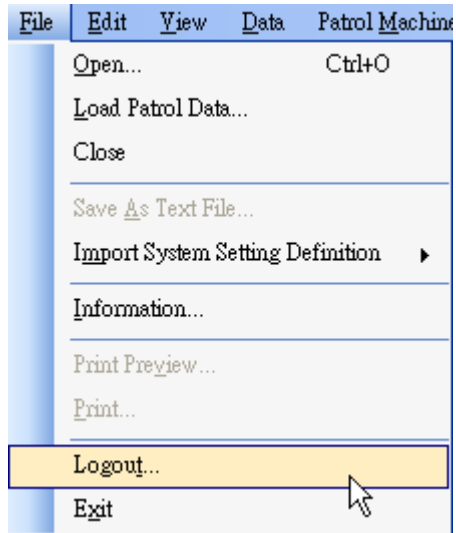
User Information

The report title is able to include the company and address of user information.

A screenshot of a dialog box titled 'Information'. It contains several input fields for user details: 'User:', 'Company:' (with 'GIGA-TMS' entered), 'Address:', 'Zip:', 'City:', 'State/Province:', 'Country:', 'Phone Number:', 'Fax Number:', and 'Remark:'. A 'Save' button is located at the bottom right of the dialog box.

Logout

After logging out, it is able to switch another user.



Patrol Manager III Web Version

User can use the internet to search any patrol data and report then print. Web version also has multiple language function, login account and password and application version are the same. Add the tag only for account function, the manager can assign the tag for account. This function is an option from application config. The top manager (Admin) only has authority to browse the customer report and machine id definition report.

Appendix I – Question & Answer

Question: Does this software install in the 64bit system?

Answer: Yes.

Question: If I already install the older patrol manager. Should I remove it then install the new version?

Answer: No, you shouldn't. You can install directly the new version.

Question: Why does download fail?

Answer: Maybe you don't have installed the driver or selected error com port or machine power is off.

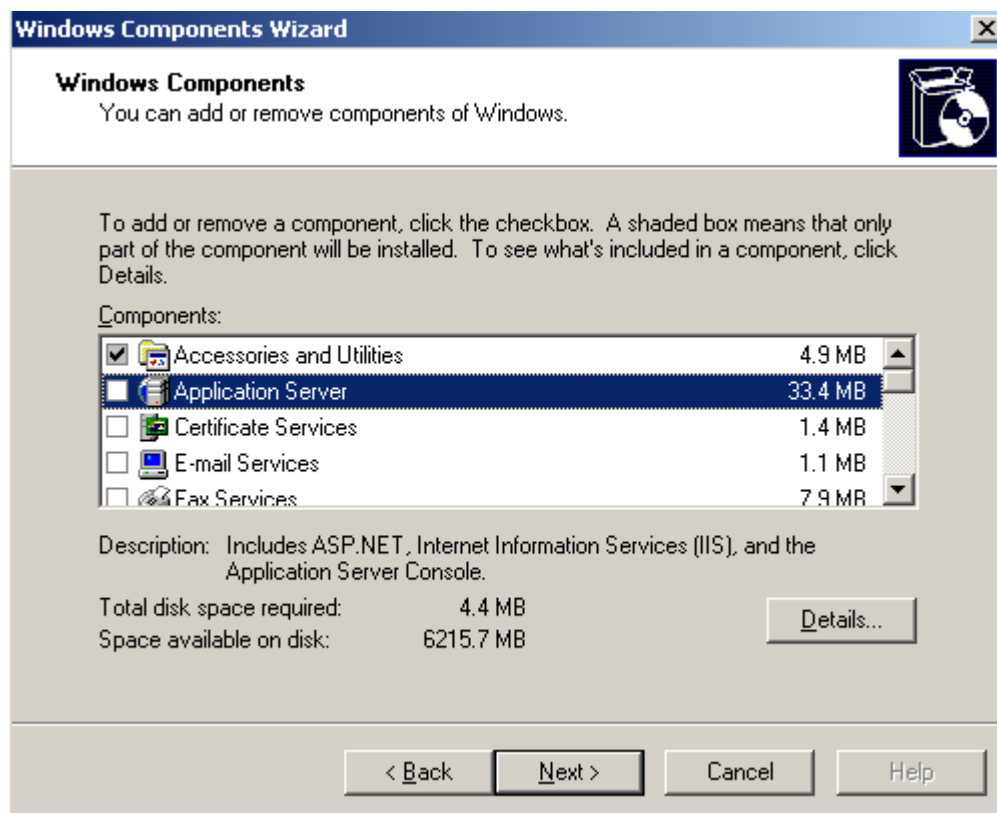
Appendix II-Each system's IIS setup and configuration

Windows 2003

Following starts to introduce how in 2003 to install IIS in Windows (Internet Information Service), because IIS is Microsoft's product this document explanation only supplies the reference, if has other questions please to inquire of Microsoft.

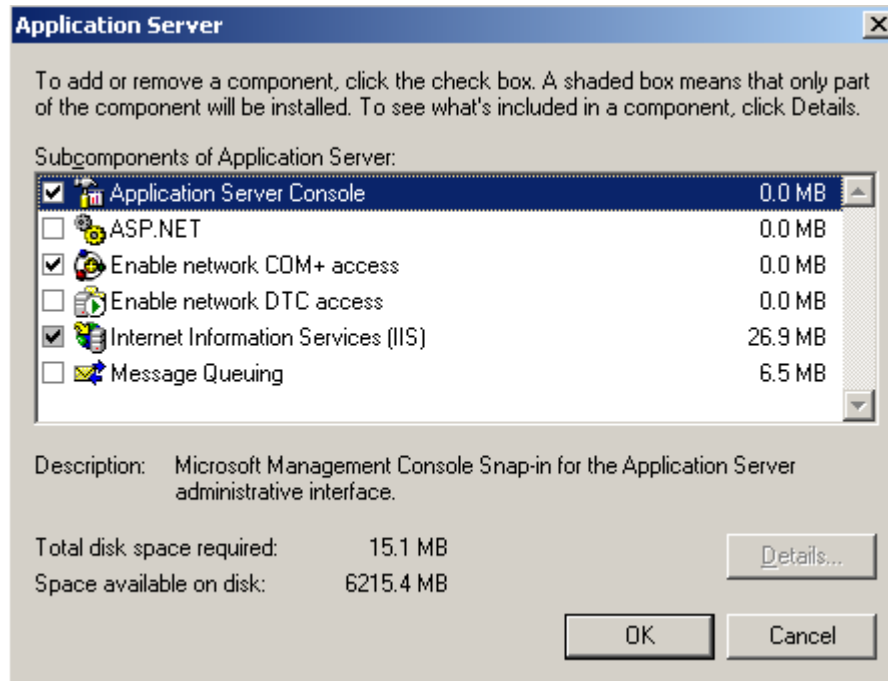
Step1

Taking the Windows 2003 Disk in the CD-ROM , click 「 Control Panel 」 then click 「 Add or Remove Programs 」 ,then click 「 Add/Remove Windows components 」



Step2

Check the 「Application Server」, then click 「Details」 then check then 「ASP.NET」, then click 「OK」 then click 「Next」

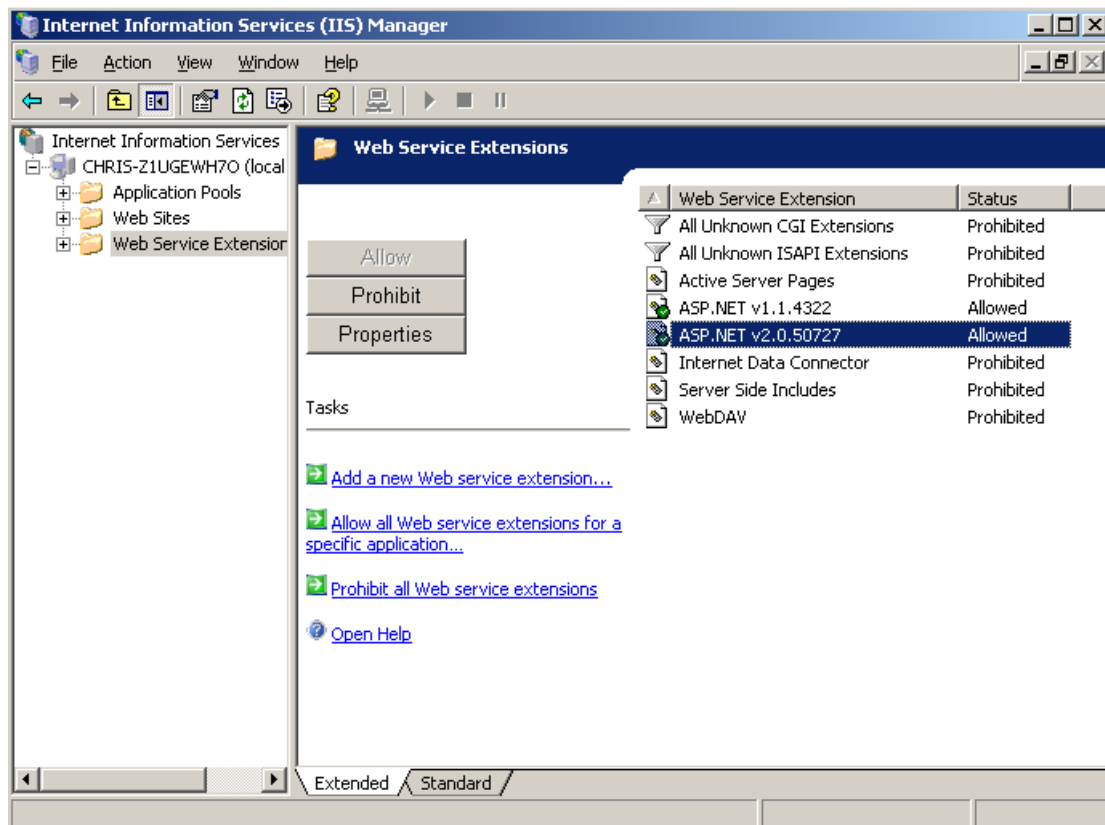


After a period of time installment will see the picture which the installment will complete to express that IIS already installed finishes

If is unable by the browser to glance over <http://localhost/PatrolManager> please again to defer to the following step normally to carry on the hypothesis.

Step1

Open 「Internet Information Services(IIS)Manager」

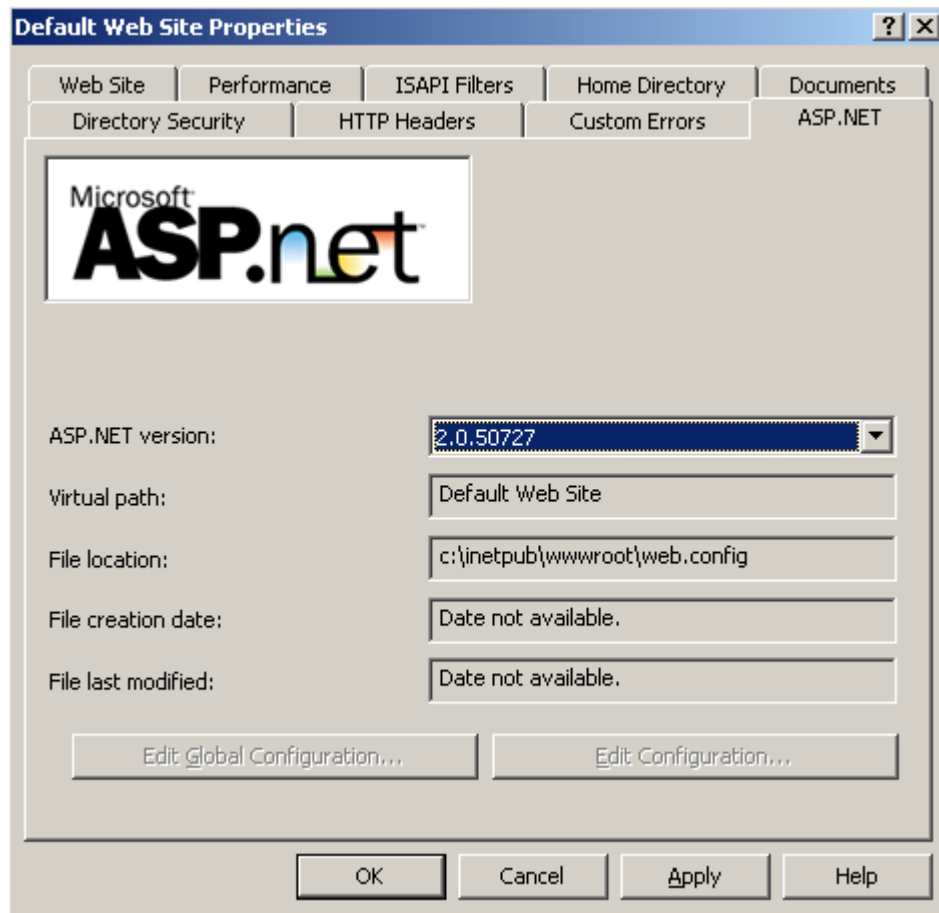


Step2

Click 「Web Service Extensions」 check the 「ASP.NETv2.0.50727」 is allowed. If you do not see the 「ASP.NETv2.050727」 after setup Framework2.0 you will see that.

Step3

Click 「Web Site」 → 「Default Web Site」 click mouse right key then click 「Properties」, then click 「ASP.NET」 ASP.NET version assign to 2.0.50727 then click OK。



After making the step 3 to complete, may glance over normally <http://localhost/PatrolManager>

If discovered that the website is unable to record normally please do refer to the appendix III to change the information bank may allow the far-end to record, and makes a information bank initialization.

Windows XP

Step1

Taking the Windows XP Disk in the CD-ROM , click 「 Control Panel 」 then click 「 Add or Remove Programs 」 ,then click 「 Add/Remove Windows components 」

Step2

Check the 「 Internet Information Services 」

After a period of time installment will see the picture which the installment will complete to express that IIS already installed finishes

Windows Vista

Step 1

Puts in the legal copy Windows Vista CD piece in the disc machine, then the spot chooses “the control bench” the spot to choose “the program and the function” again, then the spot chooses “opening or closes the Windows function”

Step 2

“Internet Information Services” will hit cancels, and “ASP.NET” will hit cancels

Step 3

Run Step3

Programs

[Step1:Install Crystal Report\(V10.2\)](#)

[Step2:Install Patorl Manager III for Windows \(V3.0R0\)](#)

[Step3:Config IIS\(Only for IIS7 up\)](#)

Windows 7

Step 1

Puts in the legal copy Windows Vista CD piece in the disc machine, then the spot chooses “the control bench” the spot to choose “the program and the function” again, then the spot chooses “opening or closes the Windows function”

Step 2

“Internet Information Services” will hit cancels, and “ASP.NET” will hit cancels

Step 3

Run Step3

Programs

[Step1:Install Crystal Report\(V10.2\)](#)

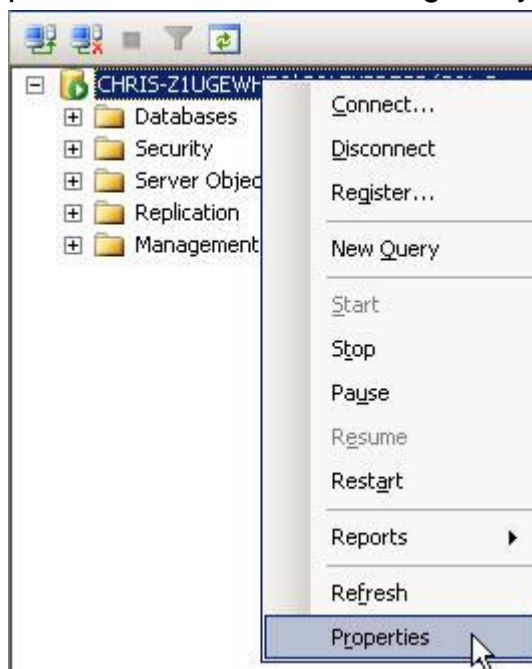
[Step2:Install Patorl Manager III for Windows \(V3.0R0\)](#)

[Step3:Config IIS\(Only for IIS7 up\)](#)

Appendix III- SQL Server allow remote connections

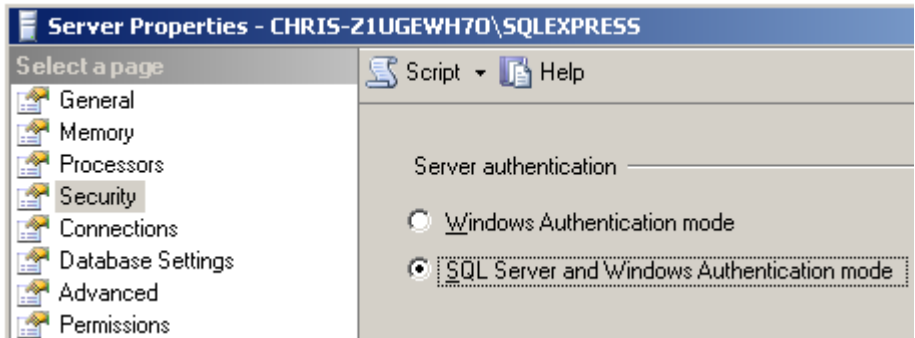
Step1

Please use SQL Server Manager to record SQL Server, then Server presses down the mouse right key spot to choose the attribute.



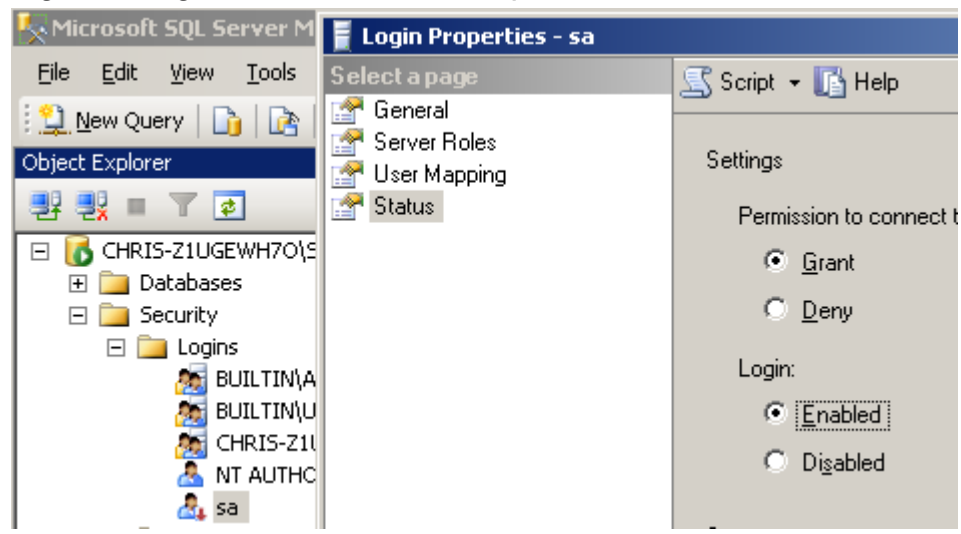
Step2

After will record the pattern changes “SQL Server and the Windows confirmation pattern”, presses down the determination.



Step3

Begins using and establishes the password the sa account number



Step4

1. Click **Start**, point to **Programs**, point to **Microsoft SQL Server 2005**, point to **Configuration Tools**, and then click **SQL Server Surface Area Configuration**.
2. On the **SQL Server 2005 Surface Area Configuration** page, click **Surface Area Configuration for Services and Connections**.
3. On the **Surface Area Configuration for Services and Connections** page, expand **Database Engine**, click **Remote Connections**, click **Local and remote connections**, click the appropriate protocol to enable for your environment, and then click **Apply**.

Note Click **OK** when you receive the following message:

Changes to Connection Settings will not take effect until you restart the Database Engine service.

4. On the **Surface Area Configuration for Services and Connections** page, expand **Database Engine**, click **Service**, click **Stop**, wait until the MSSQLSERVER service stops, and then click **Start** to restart the MSSQLSERVER service.

Step5

1. Click **Start**, point to **Programs**, point to **Microsoft SQL Server 2005**, point to **Configuration Tools**, and then click **SQL Server Surface Area Configuration**.
2. On the **SQL Server 2005 Surface Area Configuration** page, click **Surface Area Configuration for Services and Connections**.
3. On the **Surface Area Configuration for Services and Connections** page, click **SQL Server Browser**, click **Automatic** for **Startup type**, and then click **Apply**.

Note When you click the **Automatic** option, the SQL Server Browser service starts automatically every time that you start Microsoft Windows.

4. Click **Start**, and then click **OK**.

Completes above step SQL Server to allow the far-end on the possibility to record and uses the sa account number to record