

Autotrack Enterprise Work in Progress (WIP) for furniture factory

Furniture industry is one of the faster growing industry in Malaysia, productivity and quality of the end product is one of the most important factor in determine the success of the business. With today high competition in the market, productivity improving and overall productivity management is the most important key factor in the production.



Autotrack team with the various market feedback and continuous market research now would like to offer to targeted furniture factory with our latest furniture WIP tracking solution. We understand the difficulty of the foreign worker who are working in Malaysia, we do not want to burden them with additional job without any meaningful action to be done by the collecting data from every single process. The collected data must be transfer to the more meaningful and improvement of the factory productivity and management production and delivery planning in future.

Furniture fabrication start from product design, part preparation(boring/cutting), chemical treatment, Fixing, painting, quality control, packaging and shipping. Most of the process is based on on-demand from customer, most of the factory will not want to keep extra stock for stocking purpose. This is why the delivery lead time and productivity become the most important aspect to be look into for factory improvement.



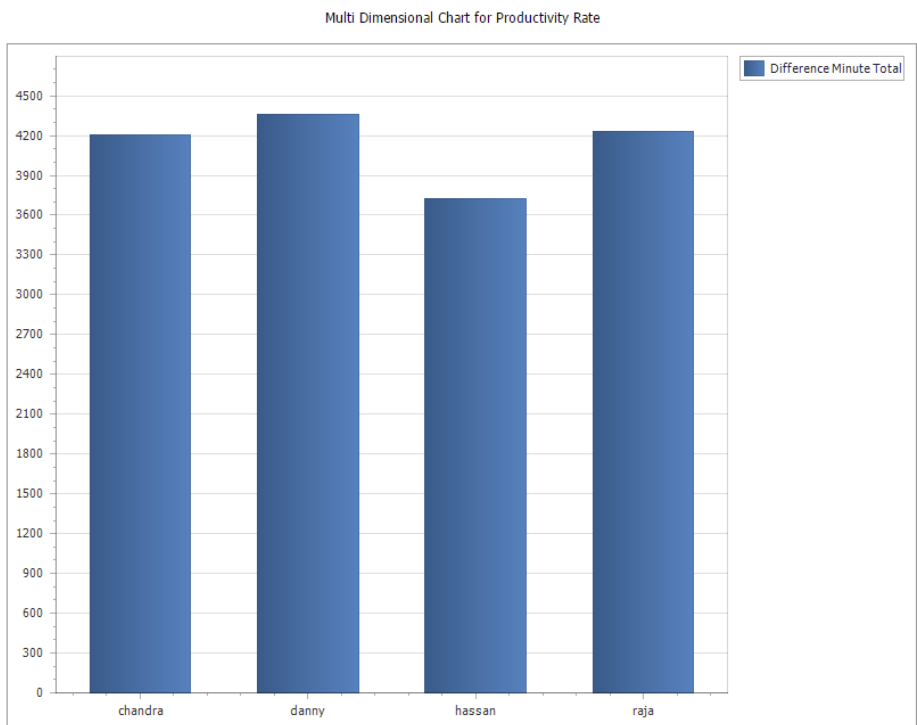
With only additional one scan during the production time, Autotrack team will by the end of the day will deliver you below meaningful and valuable analysis report. The management will be able to improve at lease 20-30% of their production capacity base on the collected data by Autotrack Team. And marketing/sales team can give the more accurate and satisfaction answer for the lead time of delivery.



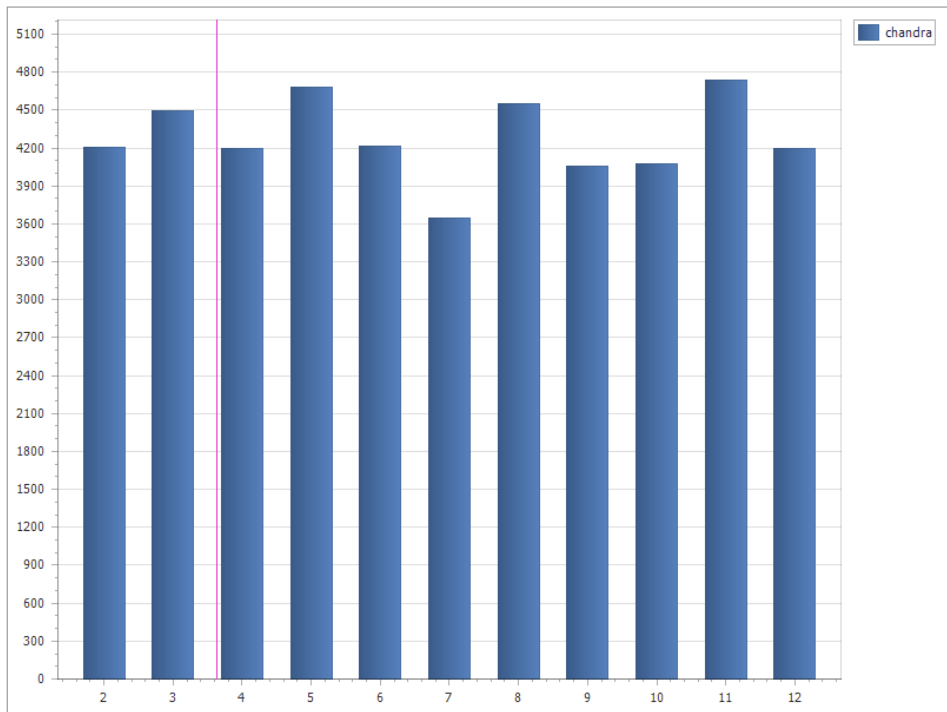
Scan for Improvement

Autotrack Analysis Chart for management productivity improvement.

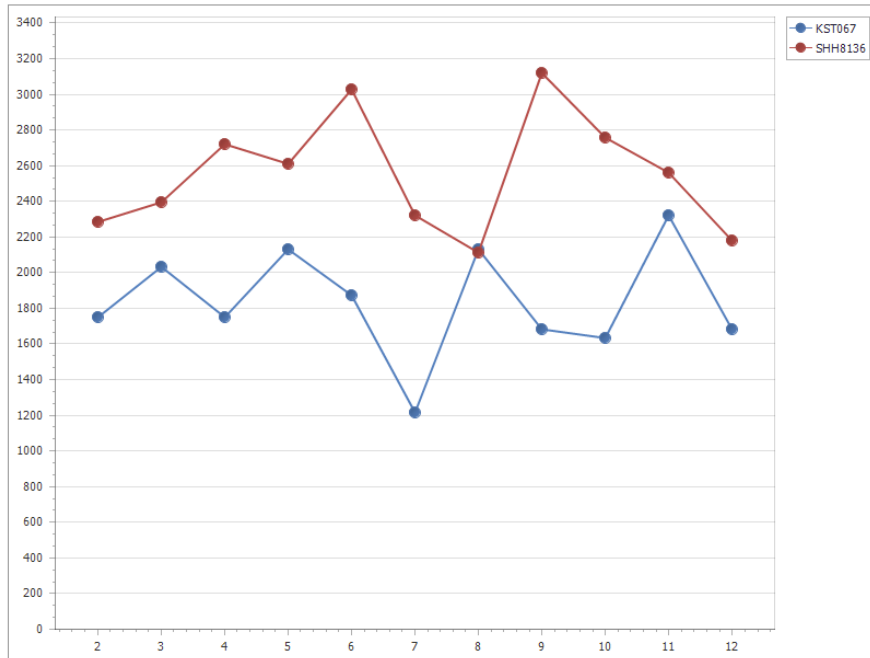
Productivity Chart for different staff



Individual Staff Production minute for every month



Monthly Production rate for 2 model of furniture



2 years total production for 2 top model

