



Conference



Media/Ad



Design



Education/Training

# T-SCREEN Interactive Screen

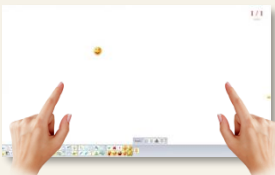
Designed to offer a holistic solution for all meetings, from web conferencing to whiteboarding as well as document sharing for business and education sector. The smart multimedia board brings a visible difference to your presentations.



T-Screen



## 10 Major Advantages



### Multi Touch Technology

10-point infrared touch technology display for more interactive collaboration in training room, meeting room, classroom and more.



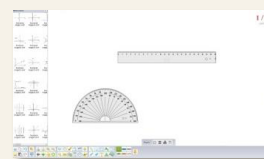
### HD LED Panel

Full HD 1920 x 1080 widescreen resolution display for outstanding colour brightness and content clarity with best visual results.



### Rich User Experience

Powered by Windows for short learning curve, better usability and richer multimedia experience of a PC.



### Whiteboarding

Digital whiteboard tool for document annotation and unlimited note-taking. Users can annotate documents in different colours, shapes, and even pen sizes.



### Video Conferencing

Support Windows based business-class video conferencing platforms for effective face-to-face interactions. Saves time and money on travelling.



### Screen Mirroring

Stream your content wirelessly to audience's devices, allowing everyone to stay connected and collaborate on your content.



### Dual USB Slot

Ease of sharing HID (Human Interface Devices) such as mouse, keyboard, presentation pointer and etc. with front panel USB2.0 slot.



### Microsoft® Office Ink Tools

Allows users to annotate on Microsoft® Office documents and write on the web with Microsoft Edge.



### Wireless Microphone

Ideal for video conferencing and voice reinforcement applications. It allows the speaker to have greater freedom of movement.



### Windows Touch-Optimised System

Leverage your content with intuitive and distinctive user interactions that are touch optimised. Simply tap, swipe, pinch and rotate to get a global view for your content.

# Add-on Features

## > Toshiba Innovative Meeting Suite / Learning Suite

An innovative and unique approach to traditional meeting, training and classroom settings with various utilities for different needs.

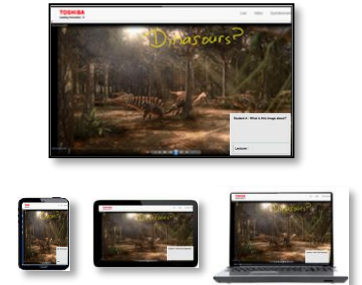
### Instant Connectivity

- Instant connection between T-Screen and mobile devices
- Connect via WiFi by scanning QR code or URL through any web browsers



### Streaming

- Content can be streamed effectively from T-Screen to all connected mobile devices without the hassle to Sign up or Log in



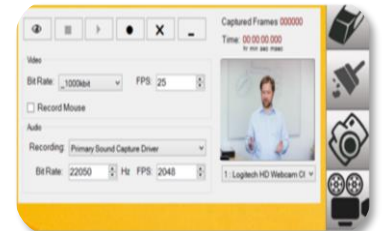
### Multiple Device Support

- Allows connection through any type of devices (i.e. laptops, tablets, phablets or smartphones with any brands and operating systems)



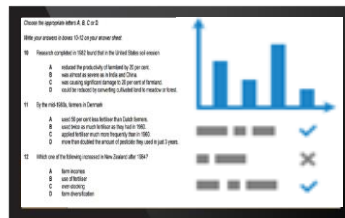
### Record and Playback

- Allows out-of-class recording, save and playback content for review and revise
- Ease of note-taking
- Effective meeting e-minutes



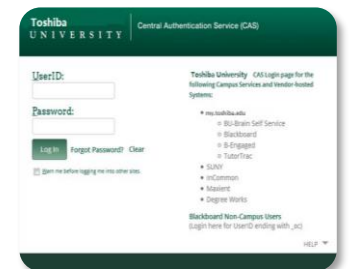
### Training Assessment

- To provide useful training, learning experience and encouraging participation with available questionnaires, quizzes and polling questions
- Seamlessly consolidating data and generating professional graph format to visualize results



### Portal Integration

- It can be integrated with company or school internal portals
- Seamlessly access to company or student portal, download and playback content for references



## > Training & Lecture Assessment

- The in-depth assessment enables the industry player to effectively:-



- This is achieved through the assessment capabilities of:-

Quality of Training

Audience Participation

Benchmarking

Internal Training



Display Parameters	
Size	65", 75"
Resolution	65" (1920 x 1080), 75" (3840 x 2160)
Display Colors	16.7M
Response Time	65" (6.5 ms), 75" (8 ms)
Touch System Parameters	
Technology	Multi Touch Screen TFT
Multi Touch	10 point
PC Connection Port	USB 2.0/ 3.0
Power Supply	PC through USB port (DC5V±5% @Min500mA)
Driver	STM32
Protection Glass Thickness	3mm
Speakers (Integrated)	8 Ohm 10watt x 2
PC Parameters	
Processor	Intel® Core™ i5 - Latest Generation Processor
Memory	8GB
Hard Drive	500GB
LAN	Yes
Wi-Fi	Yes, Built in
Input Connections	6 x USB, 1 X MIC
Output System	1 x HDMI, 1 x VGA
Operating System	Windows 10 Pro 64-bit
Included Software	Whiteboarding Software
System Power & Supply	
Power Supply	90V-265VAC, 50Hz/ 60Hz
Power Consumption	65" (270 watt), 75" (302 watt)
Environmental Conditions	
Operating Temperature	-20 ~ 70°C
Operating Humidity	55 ± 20%
Dimensions (W x D x H)	65" (1,504 x 928 x 94 mm), 75" (1,758 x 1,055 x 104 mm)
Weight	65" (58kg), 75" (82kg)

**Option** : Stand

Photos are for reference only, please refer to the actual products.  
Product design and specifications are subject to change without prior notice.  
All rights reserved.

Windows is a registered trademark of Microsoft Corporation in the United States and other countries. iPad®, iPhone® and Mac OS® are trademarks of Apple Inc., registered in the U.S. and other countries. IOS is a registered trademark of Cisco in the United States and other countries and is used under license. Android is a trademark of Google Inc. All other brand and/or product names are trademarks or registered trademarks of their respective owners. Mention of third party products herein is for informational purposes only.

**Distributed by:**

**TOSHIBA TEC MALAYSIA SDN BHD** (66785-D)

4, Jalan Saudagar U1/16, Seksyen U1, Hicom Glenmarie Industrial Park,  
40150 Shah Alam, Selangor Darul Ehsan, Malaysia.  
Tel : **03-5568 7373**    Service Hotline : **03-5568 7699**    Fax : **03-5568 7992**  
Website : [www.toshibatec.com.my](http://www.toshibatec.com.my)