



Desktop Printers DT2L / DT4L

Linerless label printer for productivity and Eco-friendliness

Simple, compact and reliable direct thermal printer. Equipped with special designed cutter module to fulfill "Print-Cut-Apply" function. Great for printing retail, shipping labels and postal services.



Built-in heavy duty linerless cutter with label present sensor to provide productivity and efficiency for field applications



Standard with Ethernet, Serial and USB ports



Flip to switch label rod to fit 1.5" and 1" core



Free GoLabel label design software for ease of use and maximizing barcode printing efficiency



Specification

DT4L / DT2L

Desktop Printer

| | | DT2L | DT4L |
|------------------|-----------------------|--|---|
| Print Method | | Direct Thermal | |
| Resolution | | 203 dpi (8 dots/mm) | |
| Print Speed | | 6 IPS (102 mm/s) | |
| Print Width | | 2.12" (54 mm) | 4.25" (108 mm) |
| Print Length | | Min. 1.57" (40 mm)**; Max. 68" (1727 mm) | Min. 1.77" (45 mm) ; Max. 68" (1727 mm) |
| Processor | | 32 Bit RISC CPU | |
| Memory | Flash | 4MB Flash (2MB for user storage); | 8MB Flash (4MB for user storage); |
| | SDRAM | 16MB | 16MB |
| Sensor Type | | Adjustable reflective sensor. Fixed transmissive sensor, central aligned | |
| Media | Types | Continuous linerless label | |
| | Width | Min. 0.6" (15 mm) – Max. 2.36" (60 mm) | 1" (25.4 mm) Min. - 4.33" (110 mm) Max. |
| | Thickness | 0.003" (0.08 mm) Min. - 0.004" (0.10 mm) Max. | |
| | Label Roll Diameter | Max. 5" (127 mm) | |
| | Core Diameter | 1", 1.5" (25.4 mm, 38.1 mm) | |
| Printer Language | | EZPL, GEPL, GZPL auto switch, GDPL optional | EZPL, GEPL, GZPL auto switch, GDPL optional |
| Software | Label Design Software | GoLabel (for EZPL only) | |
| | Driver | Vista, Windows 7, 8.1 and 10, Windows Server 2012, 2016 | |
| | DLL | Win CE, .NET, Android, Windows Mobile, Windows XP / VISTA / Windows 7 / Windows 8.1 / Windows 10 | |
| Resident Fonts | Bitmap Fonts | 6, 8, 10, 12, 14, 18, 24, 30, 16X26 and OCR A & B Bitmap fonts 0°, 90°, 180°, 270° rotatable, single characters 0°, 90°, 180°, 270° rotatable Bitmap fonts 8 times expandable in horizontal and vertical directions | |
| | TTF Fonts | TTF Fonts (Bold / Italic / Underline). 0°,90°, 180°, 270° rotatable | |
| Download Fonts | Bitmap Fonts | 0°, 90°, 180°, 270° rotatable, single characters 0°, 90°, 180°, 270° rotatable | |
| | Asian Fonts | 16x16, 24x24. Traditional Chinese (BIG-5), Simplified Chinese(GB2312), Japanese(S-JIS), Korean (KS-X1001) 0°, 90°, 180°, 270° rotatable and 8 times expandable in horizontal and vertical directions | |
| | TTF Fonts | TTF Fonts (Bold / Italic / Underline). 0°,90°, 180°, 270° rotatable | |
| Barcodes | 1-D Bar Codes | China Postal Code, Codabar, Code 11, Code 32, Code 39, Code 93, Code 128 (subset A, B, C), EAN-8, EAN-13, EAN 8/13 (with 2 & 5 digits extension), EAN 128, FIM, German Post Code, GS1 DataBar, HIBC, Industrial 2 of 5, Interleaved 2-of-5 (I 2 of 5), Interleaved 2- of-5 with Shipping Bearer Bars, ISBT – 128, ITF 14, Japanese Postnet, Logmars, MSI, Postnet, Plessey, Planet 11 & 13 digit, RPS 128, Random Weight, Standard 2 of 5, Telepen, UPC-A, UPC-E, UPC-A and UPC-E with EAN 2 or 5 digit extension, UCC 128, UCC/EAN-128 K-Mart | |
| | 2-D Bar Codes | Aztec code, Code 49, Codablock F, Datamatrix code, MaxiCode, Micro PDF417, Micro QR code, PDF417, QR code, TLC 39 | |
| Code Pages | | Codepage 437, 737, 850, 851, 852, 855, 857, 860, 861, 862, 863, 865, 866, 869 Windows 1250, 1251, 1252, 1253, 1254, 1255, 1257 Unicode UTF8 · UTF16BE · UTF16LE | |
| Graphics | | Resident graphic file types are BMP and PCX, other graphic formats are downloadable from the software | |
| Interfaces | | USB Device (B-Type) Serial port: RS-232 (DB-9) IEEE 802.3 10/100Base-Tx Ethernet port (RJ-45) | |
| RTC | | Standard | |
| Control Panel | | One Tri-color LED: Power (Green, Orange and Red) Control key: FEED | |
| Power | | Auto Switching 100-240VAC, 50-60Hz | |
| Environment | Operation Temperature | 41°F to 104°F (5°C to 40°C) | |
| | Storage Temperature | -4°F to 122°F (-20°C to 50°C) | |
| Humidity | Operation | 30-85%, non-condensing. | |
| | Storage | 10-90%, non-condensing. | |
| Agency Approvals | | CE(EMC), FCC Class A, CB, cUL, CCC | |
| Dimension | Length | 11.42" (290 mm) | 11.89" (302 mm) |
| | Height | 6.77" (172 mm) | 6.53" (166 mm) |
| | Width | 4.33" (110 mm) | 6.61" (168 mm) |
| Weight | | 3.31 lbs (1.5Kg) ,excluding consumables | 4.85 lbs (2.2Kg) ,excluding consumables |
| Accessory | | Built-in Standard : Linerless Cutter Module with Label Present Sensor | |

* Specifications are subject to change without notice. All company and/or product names are trademarks and/or registered trademarks of their respective owners.

** Minimum print height and maximum print speed specification compliance can be dependent on non-standard material variables such as label type, thickness, spacing, liner construction, etc. Godex is pleased to test non-standard materials for minimum print height and maximum print speed capability.

Applications

Applications for Labels & Barcodes

DT4L are the ultimate tool for barcode printings in any industry.



Warehouses, Logistic

Shelf labels, product serial number labels, inventory management , shipping labels, pallet labels, carton labels , etc.

Transportation

Case pack labels, address labels, product serial number labels, inventory management , shipping labels, or related industrial applications.

Retail

Content labels, courier tracking label, postage labels, etc.

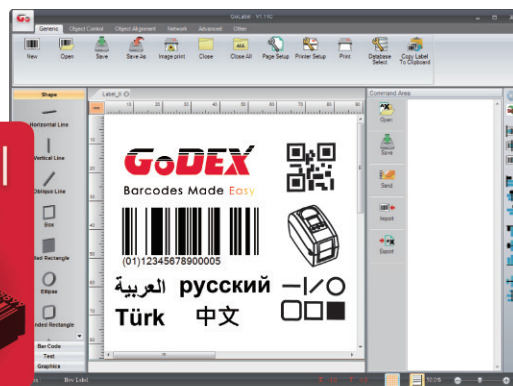
GoDEX

LABEL DESIGN SOFTWARE

GoLabel Software / User Friendly

GoLabel is based on a WYSIWYG (what you see is what you get) user interface, makes everything so easy for you to create and print barcode labels. GoLabel is the first-choice label design software that you can't miss it!

Go visit www.godexintl.com and download GoLabel to experience it!



GoDEX

RIBBONS

High quality original GoDEX thermal transfer ribbons

GoDEX offers premium thermal transfer ribbons that will fit most of your printing applications.

- Wax
- Wax/ Resin
- Resin
- Near Edge

