



WATCHMAN 3000N QUICK START Bluetooth Series

Patrol Tour Collection Terminal
with Bluetooth

WATCHMAN 3000N QUICK START Bluetooth Series PACK CONTENTS



- ▶ This Quick Start is applicable to WM 3000MFB operating in 13.56 MHz with Mifare cards and WM 3000NB operating in 125 KHz with round tags

RUN CD



- ▶ Select WM3000 Monitor

Next

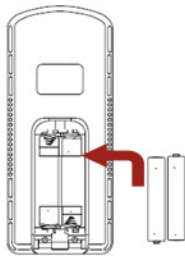
- ▶ Click Next and follow on-screen instructions

- ▶ Watchman Monitor will be installed



WATCHMAN 3000N QUICK START Bluetooth Series

SWITCH ON HANDSET

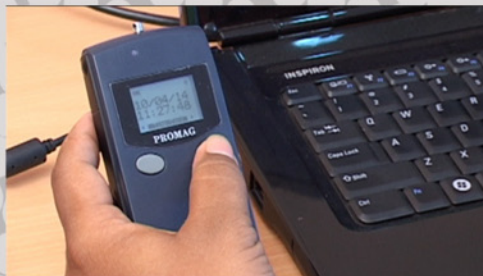


- ▶ Insert cells into handset



- ▶ Keep pressed front left button till the handset switches on

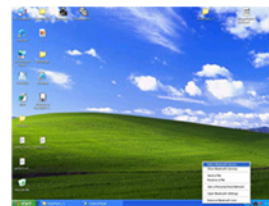
SWICH ON BLUETOOTH MODE



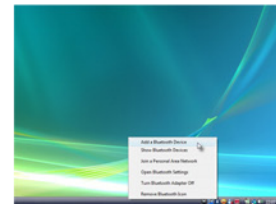
- ▶ Keep pressed front right button till Bluetooth mode icon appears on display

ACTIVATE BLUETOOTH...

XP



VISTA



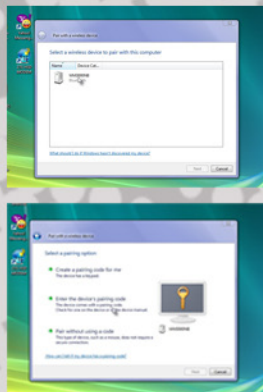
- ▶ On PC taskbar, right click Bluetooth icon
- ▶ Click Add Device and follow on-screen instructions on the wizard
- ▶ If your PC is not Bluetooth enabled use a Bluetooth adaptor (Dongle)

WATCHMAN 3000N QUICK START Bluetooth Series

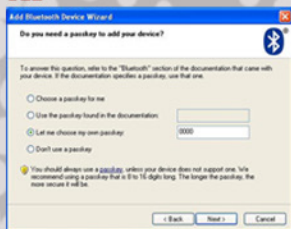
ACTIVATE BLUETOOTH...

- ▶ Enter Passkey/ Pairing code as 0000
- Open Watchman monitor
- ▶ It will show ID of handset. If not click 'AUTO' on the monitor

VISTA

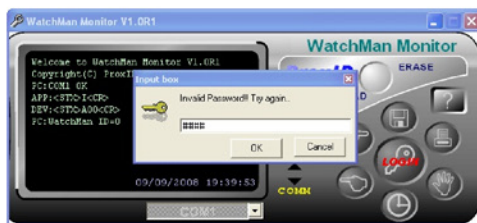


XP



SYNCHRONISE DATE & TIME

- ▶ Click Login
- Input password 0000



- ▶ Click Update Date & Time



FIX TAGS ON PATROL ROUTE...



- ▶ Instruct security to read the tags by handsets



WATCHMAN 3000N QUICK START
Bluetooth Series

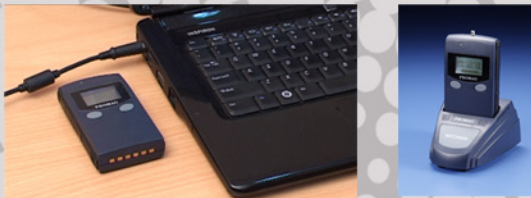
FIX TAGS ON PATROL ROUTE...



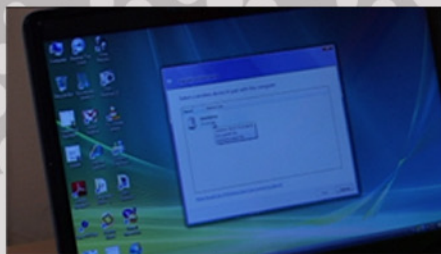
- ▶ Instruct security to read the tags by handsets



UPLOAD RECORDS TO PC



- ▶ Place handset near PC. Make use of Base Unit to save battery power
- ▶ Save, analyse and archive
- ▶ Handset stores upto 8000 records



FOR FURTHER INFO CONTACT

GIGA-TMS INC

<http://www.gigatms.com.tw>

Mail to: promag@gigatms.com.tw

TEL: +886-2-2695-4214

Fax: +886-2-2695-4213

Office: 8F, No.31, Lane 169,

Kang Ning St,

Hsi-Chih, Taipei

Taiwan



ISO 9001:2000



WATCHMAN 3000N QUICK START Bluetooth Series