

ZKTeco®

Security Anytime Anywhere.

TF1700

Your best choice for outdoor access control

ZK Technology is a leading security and time management solution provider.

ZKTeco, a premium brand of ZK Technology for time attendance, physical access control and IP cameras, represent the most advanced and state of the art solutions for attendance, access control, visitor management, car parking, elevator control, vehicle access and alarm, camera linkage control, etc.

TF1700, one of the world's smallest IP-based fingerprint terminals used for access control and time attendance features. TF1700 offers extra durability in all weather conditions including outdoor environments. It is specially designed for standalone applications such as house, office, shop, garage, factory and others.



Features



- ▶ **Rugged structure for outdoor installation and extra durability**
- * IP65 rated waterproof and weatherproof structure



- ▶ **Slim and elegant design**
- * One of the world's smallest fingerprint terminals
- * Sleek and slim design for narrow spaces



- ▶ **Fast and accurate fingerprint algorithm**
- * Fingerprint identification in 1 second
- * Stores 2200 fingerprint templates, 10000 cards and 30000 transactions



- ▶ **Easy installation and connectivity**
- * Wiegand input&output
- * Network interface by TCP/IP or RS485



- ▶ **Full access control features**
- * DLST
- * Webserver
- * Anti-passback
- * Access control interface for 3rd party electric lock, door sensor, exit button, alarm



- ▶ **Easy operation and management**
- * Work without computer
- * OLED, buzzer, 3x5 keypads and doorbell
- * Built-in keypad and RF card reader for multi-modal authentication (fingerprint/PIN/card)

Specifications:

CPU	400MHz
Memory	128MB flash + 32MB RAM
Fingerprint Sensor	500 DPI optical sensor
Algorithm Version	ZK Finger 10.0
Communication	TCP/IP, RS485,
Fingerprint Capacity	2,200 fingerprints(8,000 fingerprints)
Card Capacity	10,000 cards(50,000 cards)
Log Capacity	30,000 events
RF Card	EM(standard)/Mifare(optional)
Authentication	Finger / PIN / Card
Wiegand Signal	Wiegand in & out
Standard Function	DLST, Webserver
Ingress Protection Rate	IP65
Display	128 x 64 OLED
Keypad	3 x 5 keypads & doorbell
Sound and Interface	Buzzer and multi-color LED
Operating Voltage	12VDC
Operating Temperature	-10°C~50°C (14°F ~ 122°F)
Size	62.5mm × 185mm × 41.5mm (W × H × D)

Optional Accessories:



FR1200



RFID Reader



Exit Button



Electric Lock

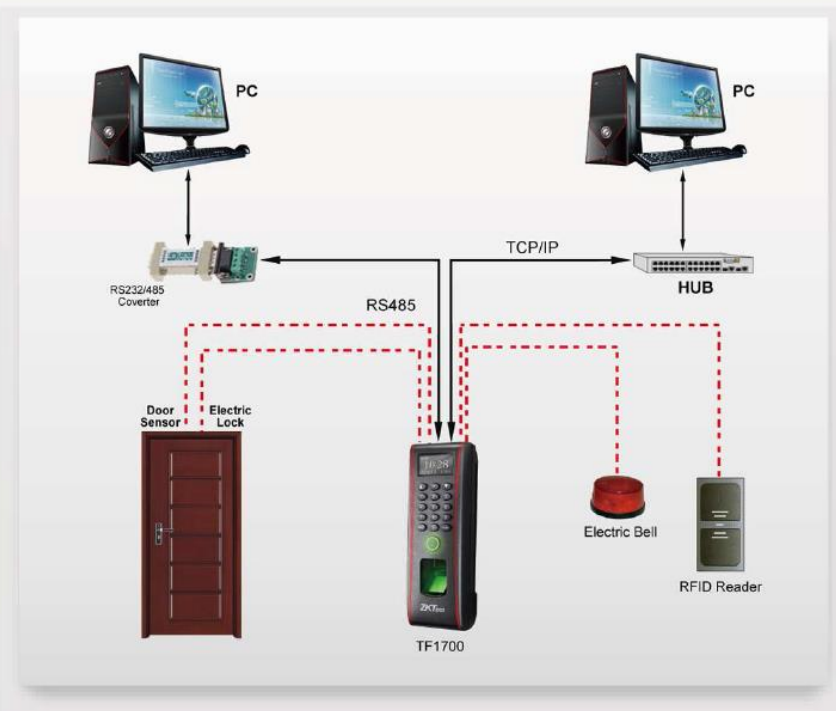


Alarm



Door Sensor

Configuration:



Application:



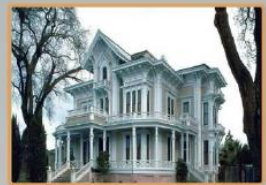
Networked Security:
School



Networked Security:
Building



Standalone Access control:
Shop



Standalone Access control:
House



Time Attendance:
Factory



Time Attendance:
Office

ALC-TECH (M) SDN BHD

NO.30-1, JALAN 6/62A,

BANDAR MANJALARA,

52200 KEPONG,

KUALA LUMPUR

TEL: 0362801650

FAX: 0362804595

www.alcglobal.com

sales-kl@alcglobal.com