

Primacy

Evolis introduces **Primacy**, the printer that will set new records in rapidity, power and high performances.

Easy-to-use, **Primacy** supports single or dual-sided printing, and, just like other printers from Evolis, offers superior quality, at an affordable price point.



THE ULTIMATE CARD PRINTER!

Primacy is a high-end printer that is easy-to-use, flexible and fast. When loaded with the Evolis cutting-edge encoding technologies, Primacy turns into the ideal solution to issue cards.

Primacy supports any requirement in card printing and encoding, in medium to large runs. This is the perfect option to deliver transportation passes, payment cards, identification badges, as well as multi-feature cards.



POWERFUL

Primacy delivers cards in runs, thanks to 100-card capacity input and output hoppers. These modules are conveniently located at the front of the printer and can be accessed easily and monitored at a glance. Primacy is the very first printer in its category to offer this level of performances through such a compact size and footprint. The printer also ensures top-notch printing quality at an unmatched printing speed.

ECO-FRIENDLY AND SILENT

Primacy is an eco-designed printer. The energy consumption is on average 5 times lower than printers from the previous generation. The printer benefits from the ENERGY STAR certification and is compliant with the ErP directive. Primacy operates at a low 48 db sound level and, therefore, can be seamlessly deployed into any working environment.

EASY-TO-USE

Shipped with the Evolis Premium Suite® software solution, Primacy makes self-adjustments when in operation. Users benefit from screen-based alert pop-ups, while 24/7 online help is available just a click away. Cards can be simply loaded at the printer's front side. Ribbons are available in a cassette system that can easily be dropped into the printer. Each ribbon is automatically set and identified.

RELIABLE

Primacy benefits from the expertise and proven quality standards of Evolis. This enables optimized operations and perfect results. Evolis' strong commitment to quality is legendary, and is echoed by a 3-year warranty.

PRIMACY, POWERFUL AND MODULAR

Primacy personalizes color cards in a record time. Up to 210 cards per hour for one side, and 140 cards per hour for dual-sided printing. The same machine can print on either one or both sides, and the dual-sided option can also be activated on-site. This flexible printer can also be fitted with additional options at any time, when magnetic and contact/contactless encoding are required.

Primacy

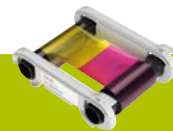
USER-FRIENDLY

- Easy access to all features
- 100-card feeder and hopper conveniently available at the front
- Monitoring of remaining cards at a glance
- Reject tray located at the back (30 cards)
- Supplied with Evolis Premium Suite[®], for automated configuration
- A lightweight printer: only 4 kg (less than 9 lbs)



FIRST-CLASS PERFORMANCES

- Increased efficiency with an autonomy of 100 cards
- Color ribbon capacity (YMCKO): 250 cards
- Full flexibility: single/dual-sided, and encoding options
- Fast: 850 cards per hour in monochrome



HIGHLY MODULAR

- Configuration as per your requirements : single or dual-sided
- Encoders can be combined for advanced personalization



GENERAL FEATURES

- Single-sided or dual-sided printing module, edge to edge printing
- Color dye sublimation, monochrome thermal transfer
- 300 dpi print head (11.8 dots/mm)
- 16MB Memory (RAM)

PRINTING PERFORMANCES

- Single side:
 - Color (YMCKO): 190 - 210 cards /hour
 - Monochrome: 600 - 850 cards /hour
- Dual side (YMCKO-K): 140 cards /hour

CARD MANAGEMENT AND SPECIFICATIONS

- Input hopper capacity: 100 cards (0.76 mm - 30 mil)
- Output hopper capacity: 100 cards (0.76 mm - 30 mil)
- Reject tray: 30 cards (0.76 mm - 30 mil)
- Card thickness: 0.25 to 1.25 mm (10 to 50 mil), gauge adjustment
- Types of cards: All PVC, Composite PVC cards, PET, ABS⁽¹⁾ and special varnished⁽¹⁾ cards
- Card format ISO CR80 - ISO 7810 (53.98mm x 85.60 mm)

EVOLIS HIGH TRUST[®] RIBBONS

To maximize the quality and durability of printed cards, the lifespan of the print head and the overall printer reliability, use Evolis High Trust[®] ribbons.

- Automatic identification and setting
- Delivered in a drop-in cassette for easy handling
- Ribbon saver for monochrome printing
- Ribbon capacity:
 - YMCKO: 250 prints / roll
 - YMCKO-K: 200 prints / roll
 - ½ YMCKO: 400 prints / roll
 - KO: 600 prints / roll
 - Monochrome ribbon: 1000 prints / roll⁽¹⁾
 - Hologram varnish: 400 prints / roll

INTERFACES

- USB 1.1 (compatible 2.0)
- Ethernet TCP-IP 10BaseT, 100BaseT (Traffic Led)

DISPLAY

- Printer LEDs
- Graphical notifications⁽²⁾ from the printer: Empty input hopper alert, cleaning alerts, empty/low level ribbon alert

SOFTWARE

- Delivered with Evolis Premium Suite[®] for Windows:
 - Printer driver
 - Evolis Print Center for printer administration and settings
 - Printer Manager for bi-directional graphical notification⁽³⁾
 - Compatible with Windows: XP SP3; Vista 32/64, W7 32/64⁽⁴⁾
- Delivered with eMedia CS Card Designer, Standard Edition, unlimited version (compatible with Windows[™] 7 and Vista)
- Delivered with a driver for Mac OS X (from 10.5 onwards)
- Other OS: Linux upon request

WARRANTY

- 3-year warranty (printer and printhead)⁽⁵⁾

SIZE AND WEIGHT

- Size: Height 247mm (9.72") x length 205mm (8.07") x width 381 mm (14.99")
- With reject tray: Height 247mm (9.72") x length 205mm (8.07") x width 481 mm (18.93")
- Weight: 4.02 kg (8.86 lbs)

SOUND (EVALUATED ACCORDING TO THE ISO 7779 STANDARD)

- Sound pressure in assistant positions LpAm (colour mode YMCKO)
- When operating: 48dB (A)
- In sleep mode: background noise level

SAFETY

- Support for Kensington[®] security lock
- Data encryption for magnetic encoding

PACKAGING CONTENT

- Printer
- CD-ROM with printer drivers, user manuals, and eMedia CS
- Cleaning kit
- USB cable
- Reject tray
- Power supply and cord

OPTIONS & ACCESSORIES

- Colors available : Fire Red & Brilliant Blue
- Upgrade kit for dual-sided printing
- Encoding options can be combined. Upgrade can be carried out on-site, by adding new modules:
 - Magnetic stripe encoder, smart contact station, smart encoding unit, contactless encoding unit

ENVIRONMENTAL FEATURES, CERTIFICATIONS AND STATEMENT OF COMPLIANCE

- Standby modes & reduced energy consumption
- CE, FCC, IEC, VCCI, CCC⁽⁶⁾, KC⁽⁶⁾
- ErP 2009/125/CE, ENERGY STAR, ROHS

POWER

- Power supply: 100-240 Volts AC, 50-60 Hz, 1,8A
- Printer: 24 Volts DC, 3 A

ENVIRONMENT

- Min/max operating temperature: 15° / 30 °C (59° / 86 °F)
- Humidity: 20% to 65% non-condensing
- Min/max storage temperature: -5° / +70 °C (23° / 158 °F)
- Storage humidity: 20% to 70% non-condensing
- Operating ventilation: open air

RESIDENT FONTS

- Arial 100, Arial bold 100
- Barcode: Code 39, Code 128, EAN 13, 2/5 interleaved

¹ Under specific conditions / ² Depends on the Windows[™] version / ³ Requires the .net 4.0 client profile version / ⁴ For older Windows versions, you can use the printer through the driver only (no Print Center, no Printer Manager) / ⁵ Warranty subject to observance of specific conditions and use of Evolis High Trust[®] ribbons / ⁶ Expected in December 2012

EUROPE - MIDDLE-EAST - AFRICA

Evolis Card Printer - 14 avenue de la Fontaine - ZI Angers - 49070 Beaucouzé - France
T +33 (0) 241 367 606 - F +33 (0) 241 367 612 - info@evolis.com

AMERICAS - Evolis Inc. - Fort Lauderdale - evolisin@evolis.com

ASIA-PACIFIC - Evolis Asia Pte Ltd - Singapore - evolisia@evolis.com

CHINA - infochina@evolis.com

JAPAN - infojapan@evolis.com



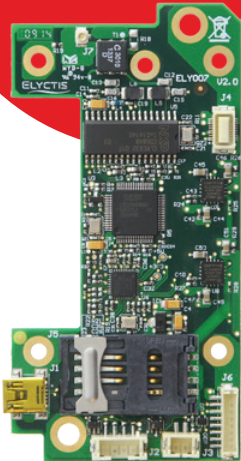
100% recycled paper



www.evolis.com

evolis
card printers
www.alcaidc.com

EVOLIS ELYCTIS DUAL



PRINTER OPTION



DUAL SMART CONTACT AND CONTACTLESS CARD ENCODING

The **Evolis Elyctis Dual** encoder has been designed in partnership with Elyctis, an expert in IDENTIV chipsets integration, with a focus on delivering a compact and efficient dual-feature device to be implemented in most of the Evolis printers.

This encoder is available as a basic module with a distinct antenna, an ISO SAM slot and an ISO interface to the contact station.

It is plugged to the USB port hub inside the Evolis printer.

This new module offers superior performance in terms of speed, security and interoperability, and is optimized to manage electronically secured IDs and financial cards.

The encoder is compliant with EMV 2011 standard.

Supplied with PC/SC drivers, the encoder supports Windows XP and Windows 7 and 8 platforms.

Target markets

- Payment
- Access Control
- Transit pass
- Secured ID

Supported Printers

- *Factory mounted*
 - Zenius Expert
 - Primacy
 - Primacy Lamination
 - Quantum2
 - Securion
 - Avansia
- *On-site upgrade*
 - Zenius Expert
 - Primacy
 - Primacy Lamination
 - Quantum2
 - Avansia
- *Upon project request*
 - Elypso
 - KC200/KC200B
 - KM500B
 - KM2000B

Software & SDK

PC/SC Software and dev. kit free of charge



As an option, a secondary board offers an extension of two additional SAM slots.

The whole product is seen as 5 PC/SC readers: 1 contactless, 1 Contact and 3 SIM/SAM.

About Elyctis

Established in 2008, ELYCTIS has a longstanding expertise in eID projects, as well as hardware and software developments dedicated to Secure Identity Documents (e-passport, e-ID card, e-driver license, ...).

ELYCTIS is a specialist in RFID technology.



Designed for Evolis by Elyctis © 2016

EVOLIS ELYCTIS DUAL

CONTACTLESS SMARTCARD INTERFACE

STANDARDS	<ul style="list-style-type: none"> • ISO 15693¹ • ISO 14443 Part 1 to 4 Type A & B • Protocol MIFARE & T=CL
RFID CARRIER	<ul style="list-style-type: none"> • 13.56 MHz
SUPPORTED CARDS	Complete NXP (Philips) MIFARE family supported: <ul style="list-style-type: none"> • MIFARE Ultralight • 1K, 4K, • DESFireEV1, • MIFARE Plus, • MIFARE ProX, • MIFARE SmartMX etc...
READING DISTANCE	<ul style="list-style-type: none"> • Up to 8 cm depending on tag, antenna position and environment²
CARD BAUD RATE	<ul style="list-style-type: none"> • Up to 848 kbps
FIRMWARE	<ul style="list-style-type: none"> • Field upgradable firmware support • Support to configure RF • Pass-through command to communicate with lower protocol layer for Contact and Contactless interface

CONTACT SMARTCARD INTERFACE

STANDARDS	<ul style="list-style-type: none"> • ISO 7816 Part 1 to 4 - T=0 & T=1 Protocol • EMV 2011 4.3 Level 1 • Memory cards (Non ISO Smartcard) supported through M-Card API
SUPPORTED TYPES	<ul style="list-style-type: none"> • Class A/B/C – 5V, 3V and 1.8V
CARD BAUD RATE	<ul style="list-style-type: none"> • Communication speed up to 600 Kbps – TA1 = 97 supported

SIM / SAM INTERFACES

CARD FORMAT	<ul style="list-style-type: none"> • ID-000 (μSIM)
NUMBER OF SLOTS	<ul style="list-style-type: none"> • 1 slot
SMARTCARD CLASS	<ul style="list-style-type: none"> • A , AB and ABC (5V, 3V, 1.8V cards)

OPTIONAL CARD WITH 2 SIM / SAM INTERFACES

CARD FORMAT	<ul style="list-style-type: none"> • 2 ID-000 (μSIM) slots
STANDARDS	<ul style="list-style-type: none"> • ISO 7816 Part 1 to 4 - T=0 & T=1 Protocol

PC/ SC 2.01 MODE

WINDOWS DRIVER	<ul style="list-style-type: none"> • XP/7/8/10/CE 5.0/Server and PC/SC.Net Wrapper
LINUX/ANDROID	<ul style="list-style-type: none"> • Supported by PCSC-lite CCID driver
API & SDK	<ul style="list-style-type: none"> • Full PC/SC – Free SDK available

Data source: Elyctis website: MultiSlot USB Reader datasheet – 2015

1. Used with CR80 contactless cards
2. Reading distance varies based on operating environment, antenna position and type of card accessed